

Detroit Wayne Integrated Health Network



Our History

- The Detroit Wayne Mental Health Authority (DWMHA) was created by combination of State Legislative Action and an Enabling Resolution adopted by the Wayne County Commission.
- Prior to DWMHA becoming an independent governmental entity on October 1, 2013, DWMHA duties were performed as a part of the Health and Human Services department of Wayne County government.
- As of October 1, 2014, DWMHA fully separated from Wayne County.
- In May 2016, DWMHA relocated to the current Milwaukee location.
- On October 1, 2019, DWMHA became the Detroit Wayne Integrated Health Network (DWIHN) to more accurately reflect the direction of the organization to provide a more holistic approach to the care it provides to the children and adults it serves in Wayne County.
- DWIHN is the largest community mental health organization in the state of Michigan serving over 75,000 people.

Mission, Vision and Values

Mission:

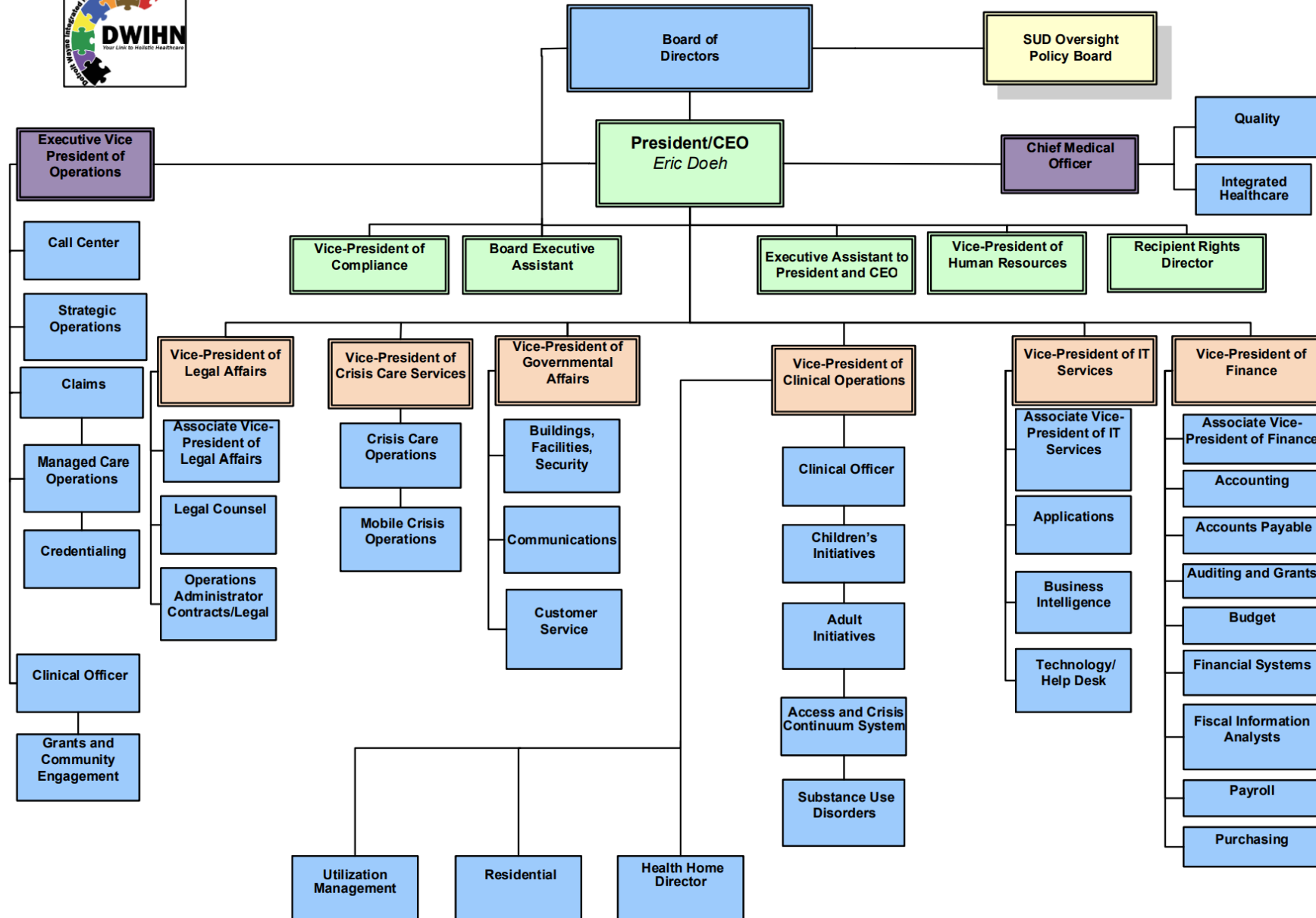
We are a healthcare safety net organization that provides access to a full array of integrated services that facilitate individuals to maximize their level of function and create opportunities for quality of life.

Vision:

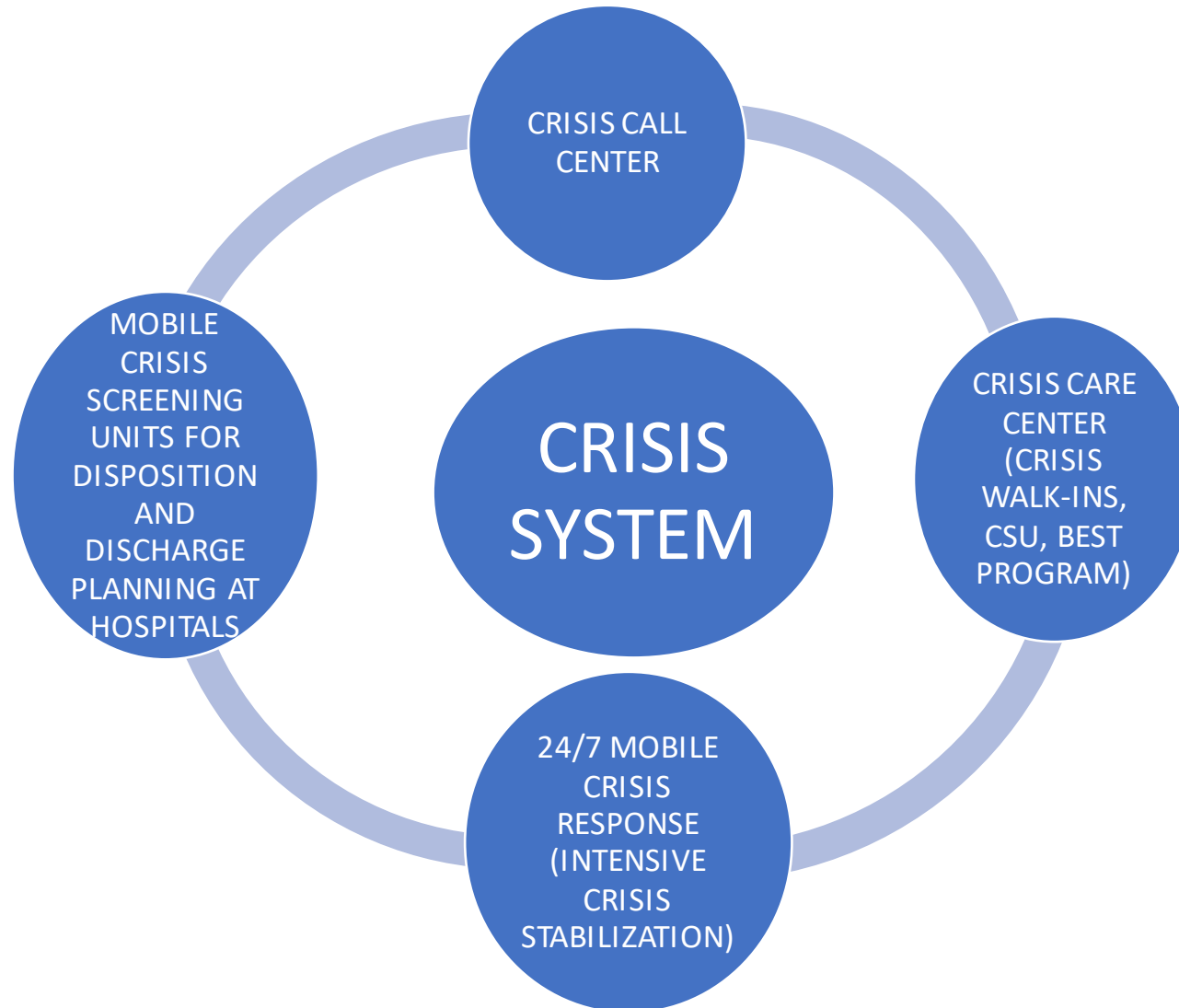
To be recognized as a national leader that improves the behavioral and physical health status of those we serve, through partnerships that provide programs promoting integrative holistic health and wellness.

Values:

- We are an advocate, person-centered, family and community focused organization.
- We are an innovative outcome, data driven and evidence-based organization.
- We respect the dignity and diversity of individuals, providers, staff and communities.
- We are inclusive culturally sensitive and competent.
- We are fiscally responsible and accountable with the highest standards of integrity.
- We achieve our mission and vision through partnerships and collaboration.



DWIHN CRISIS CONTINUUM



CURRENT CRISIS CONTRACTORS AND FUTURE DIRECTIONS

DWIHN Provided Crisis Continuum Services

Crisis Call Center
Protocall

Mobile Crisis Screening Units
- COPE (Adults)
- The Guidance Center (Children)
- New Oakland Center (Children)

Mobile Crisis Service
- COPE (Adults)
- New Oakland (Children)

Crisis Stabilization Units
- COPE
- Team Wellness Center

Crisis Residential Units
- Hegira Health (Adults)
- Safehaus (Children)

**Care Center +
Maintain Current
CSU/BEST
Contracts to
Accommodate
Backlog**

DWIHN Clinical Care Center



- Historically, persons in need of behavioral health crisis services walk in to hospital emergency departments
- Emergency medical services or police often take individuals to the nearest emergency department or Detroit Receiving Hospital Crisis Center for behavioral health crisis.



Clinical Care Center
Did you know...



- In FY 20/21 Adult and Children Crisis Providers completed 15,193 crisis screenings, with an overall diversion rate of 37.5
- Currently in the DWIHN system of care there are:
 - Two Crisis Stabilization Units with a capacity for 27
 - Two Crisis Residential Units for adults totaling 20 beds (16 in use due to COVID)
 - One Crisis Residential Unit for Children and Adolescents totaling 12 beds



Clinical Care Center
Did you know...



DWIHN Clinical Care Center

- Is a facility where individuals, ages 14 years and up can receive short term crisis intervention services
- Will add 36 beds to DWIHN's Crisis Continuum
- Is a 24hr center centrally located in the heart of Detroit, serving adults and children
- Construction begins Spring 2022
- Completion date Winter 2023

Clinical Care Center

Total Bed Capacity = 36

Adult Crisis Stabilization	Adolescent Crisis Stabilization	BEST (Building Empowered Supportive Transition)
<i>16 beds</i>	<i>14 beds</i>	<i>6 beds</i>
<ul style="list-style-type: none"> • Crisis intervention and stabilization services for individuals in an immediate mental health and/or substance use crisis • 18 years or older • 72 hour length of stay 	<ul style="list-style-type: none"> • Crisis intervention and stabilization services for individuals in an immediate mental health and/or substance use crisis • 14-17 years old • 72 hour length of stay 	<ul style="list-style-type: none"> • Continued stabilization and transition services post-crisis to help prevent future recidivism • Peer led programming • 18 years or older

FY 20/21 Emergency Room Data

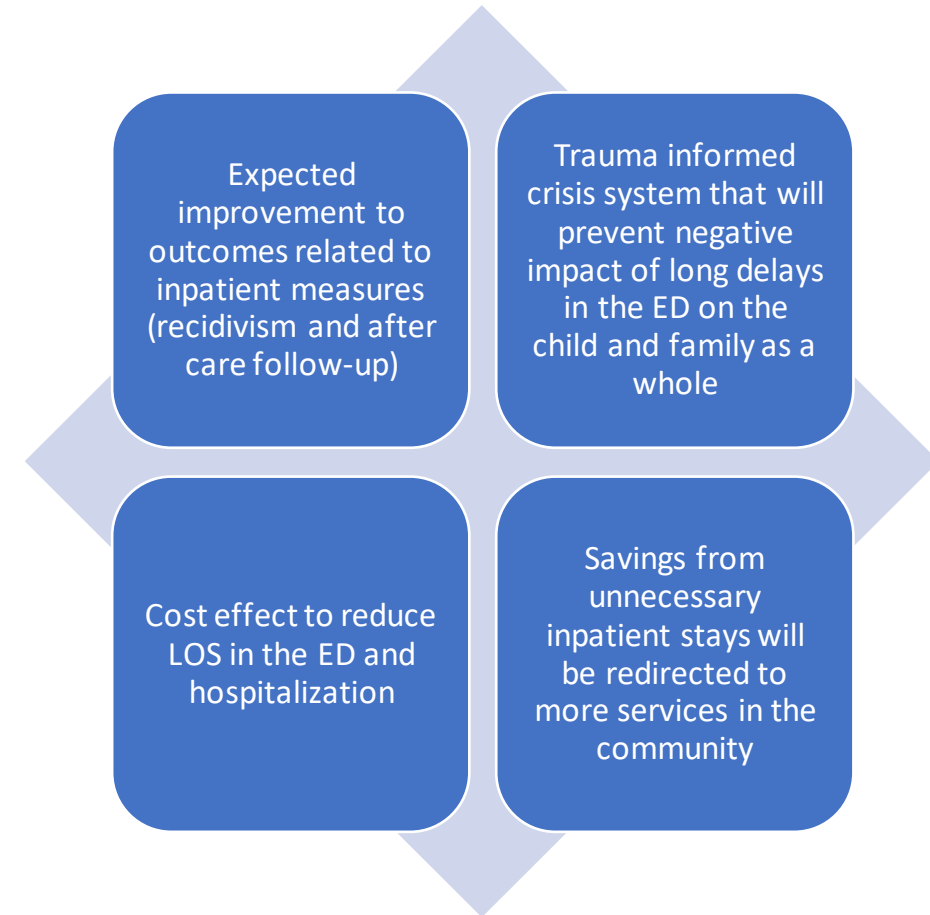
How can the Clinical Crisis Care Center impact this data?

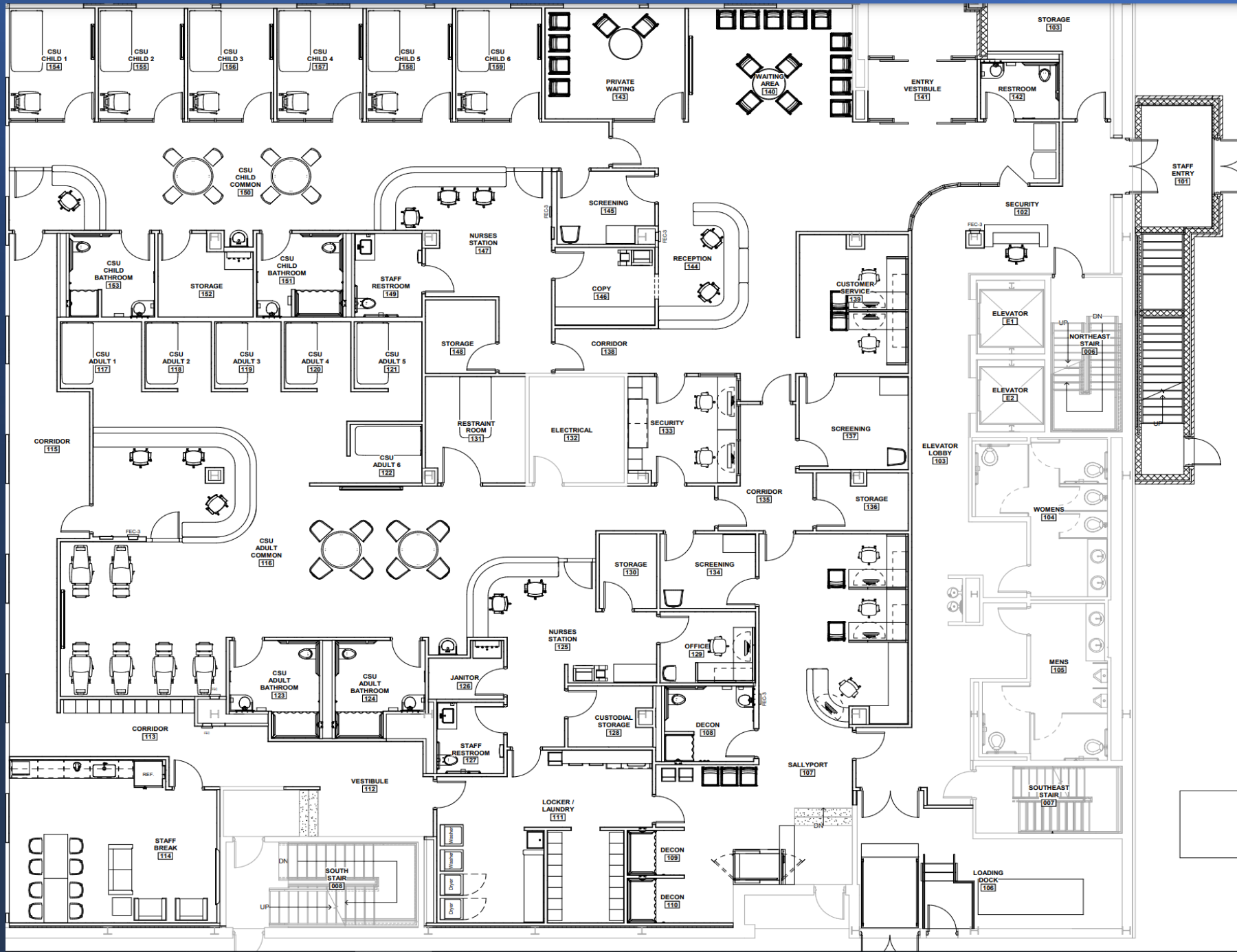
- 12,429 Request for Service were completed from Emergency Departments

Arrival Types	Disposition
Walk-In =5,710 Police = 3,190 Ambulance = 2,462 Family = 928 Other = 139	67% Admitted 30% Diverted

Clinical Care Center Impact on the Individuals We Serve and DWIHN Operations

- Provides an alternative service for individuals in psychiatric crisis
- Treatment will be in the list restrictive environment while reducing length of stay in the ED's
- Improve Quality of care for children, youth, families and adults in crisis
- Proactively address the needs of the community





FLOOR LAYOUT

1st Floor

- Crisis Stabilization
- (6 children, 12 adult)





FLOOR LAYOUT

2ND Floor

- Crisis Residential (15 beds)
- Sober Living (6 beds)





FLOOR LAYOUT

3rd Floor

- Access Call Center
- Customer Service
- TBA Provider
- Recipient Rights
- Residential

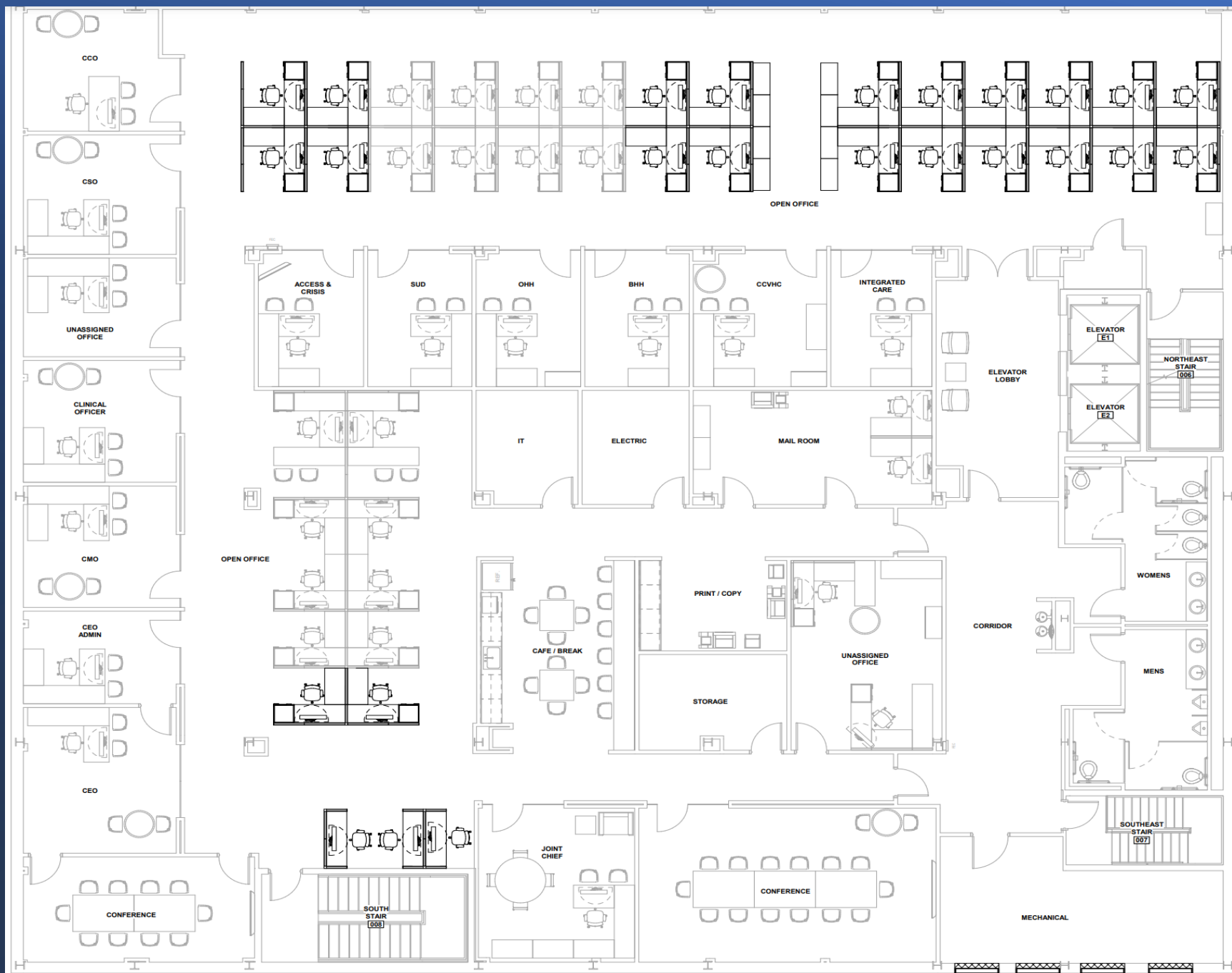


FLOOR LAYOUT

4TH Floor

- Children's Initiatives
- Clinical Practice Improvement
- Quality
- Utilization Mgmt
- Workforce Development





FLOOR LAYOUT

5th Floor

- Clinical Administration
- Integrated Healthcare
- SUD
- Open Hoteling



Population Served



Fiscal Year

FY-2021

Insurance

All

SUD Co Occuring

All

Disability Designation

All

Age Category

All

Language

All

Gender

All

Race

All

Residency

All

Funding Source

All

Gender	Consumers	%GT Consumers
Female	34852	47.34%
Male	38757	52.65%
Unreported	7	0.01%
Total	73616	100.00%

FundingSource	Consumers	%GT Consumers
Medicaid	46358	62.97%
Healthy Michigan Plan	18225	24.76%
DWIHN - GF	7153	9.72%
SUD Block Grant	6198	8.42%
MI Health Link	5881	7.99%
Total	73616	100.00%

Race	Consumers	%GT Consumers
White	23219	31.54%
Unreported	2266	3.08%
Two or more races	1848	2.51%
Other race	4351	5.91%
Native Hawaiian or other Pacific	53	0.07%
Black or	40422	54.91%
Total	73616	100.00%

SudCooccurring	Consumers	%GT Consumers
N	68116	92.53%
Y	5500	7.47%
Total	73616	100.00%

Insurance	Consumers	%GT Consumers
Child Waiver	20	0.03%
DWIHN - GF	5765	7.83%
Healthy Michigan Plan	17444	23.70%
Medicaid	45191	61.39%
MI Health Link	5195	7.06%
SED Waiver	1	0.00%
Total	73616	100.00%

DisabilityDesignation	Consumers	%GT Consumer
DD	12171	16.53%
ED	57	0.08%
MI	1789	2.43%
SED	10630	14.44%
SMI	43348	58.88%
SUD Only	2530	3.44%
Total	73616	100.00%

Residency	Consumers	%GT Consumers
Detroit	37571	51.04%
Out County	36045	48.96%
Total	73616	100.00%

AgeCategory	Consumers	%GT Consumers
0 - 17	15487	21.04%
18 - 21	3801	5.16%
22 - 50	33184	45.08%
51 - 64	15391	20.91%
65+	5753	7.81%
Total	73616	100.00%

Language	Consumers	%GT Consumers
English	62466	84.85%
Unreported	8599	11.68%
ARABIC	1367	1.86%
SPANISH	860	1.17%
Other	324	0.44%
Total	73616	100.00%



Provider Profile : DWIHN Behavioral Health CRSP Hospitalizations Comparisons

2022Q1

Top N



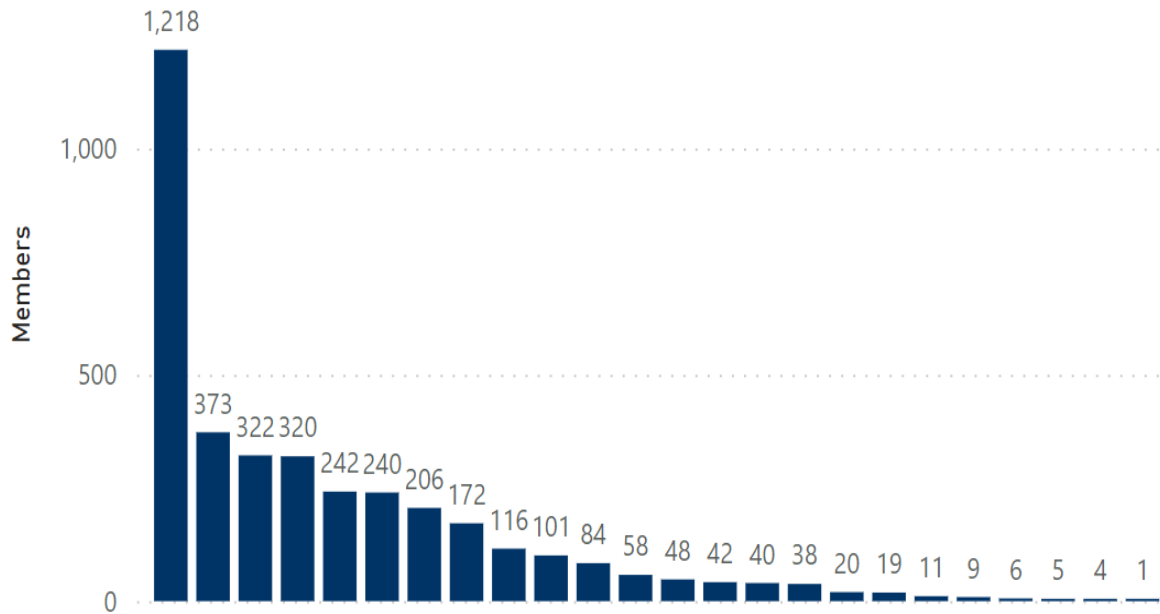
Hospitalizations per CRSP -
Network Avg

205

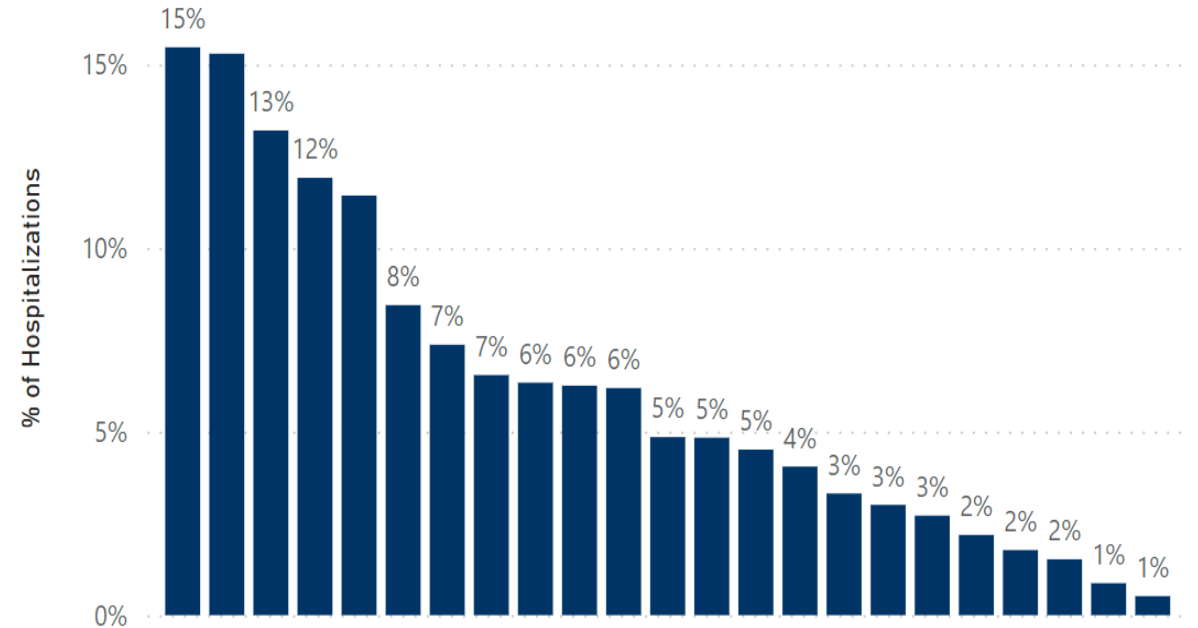
% of Hospitalizations - Network Avg

19%

Hospitalizations



% Hospitalizations





Provider Profile : DWIHN Behavioral Health CRSP
Members Hospitalized Comparisons

2022Q1

Top N

- 5
- 10
- 15
- 20
- 25

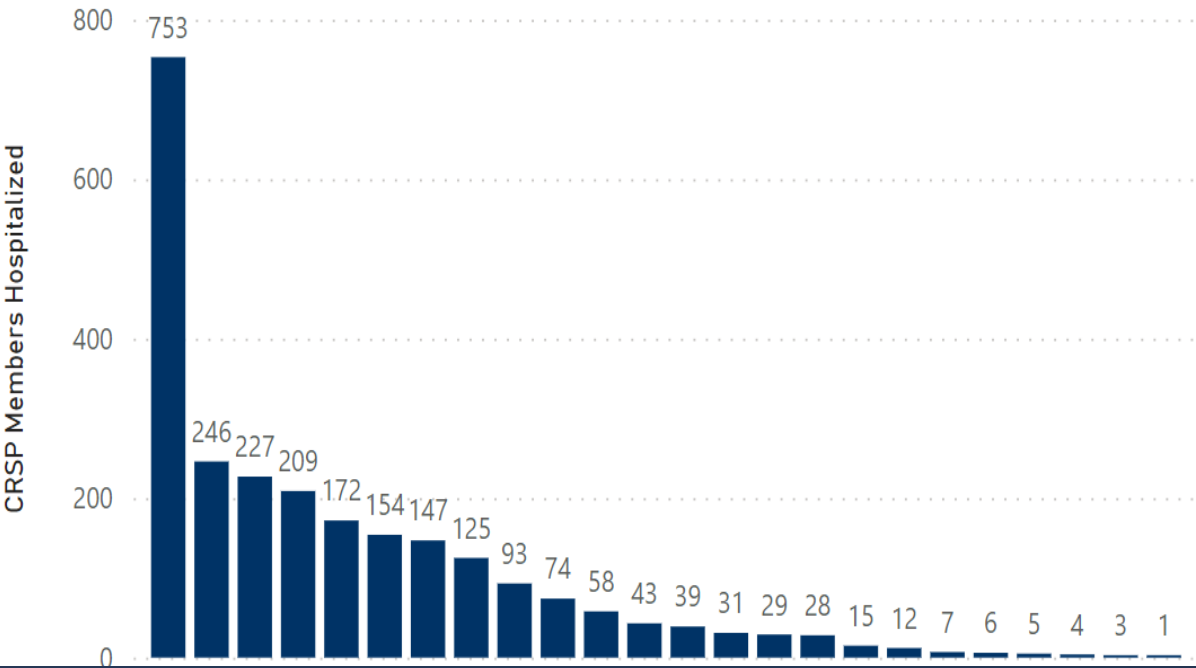
Avg Member per CRSP
Hospitalized - Network Avg

172

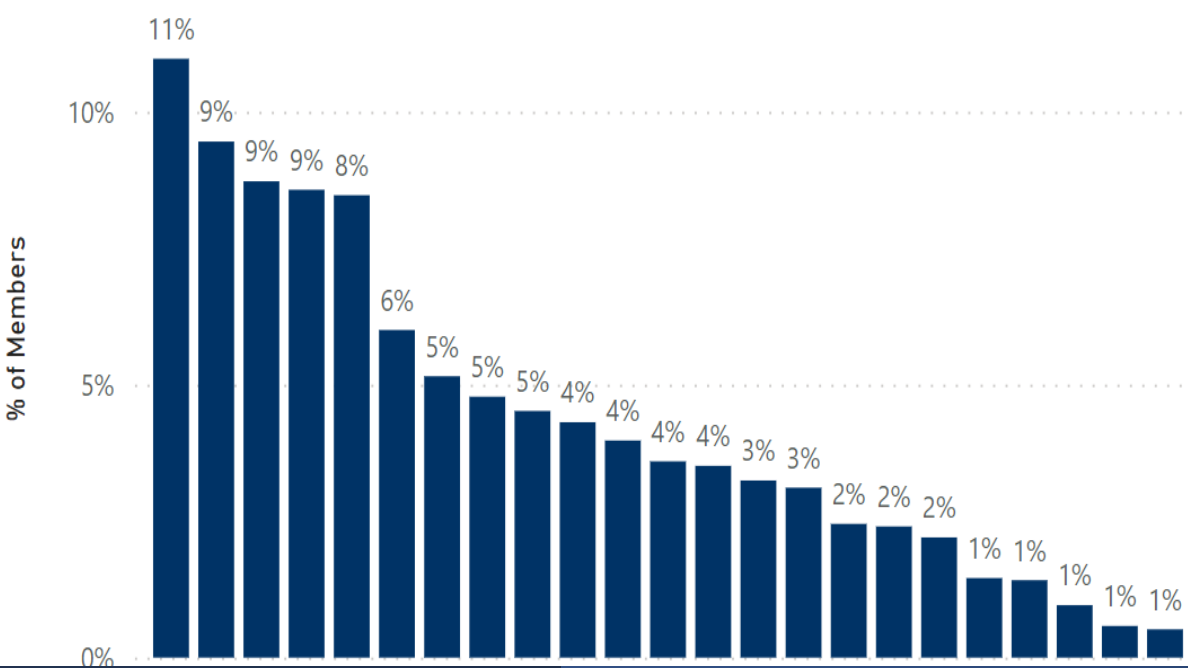
% of Members Hospitalized -
Network %

16%

Members Hospitalized



% of Members Hospitalized





Provider Profile : DWIHN Behavioral Health CRSP
Recidivism Comparisons

2022Q1

Top N



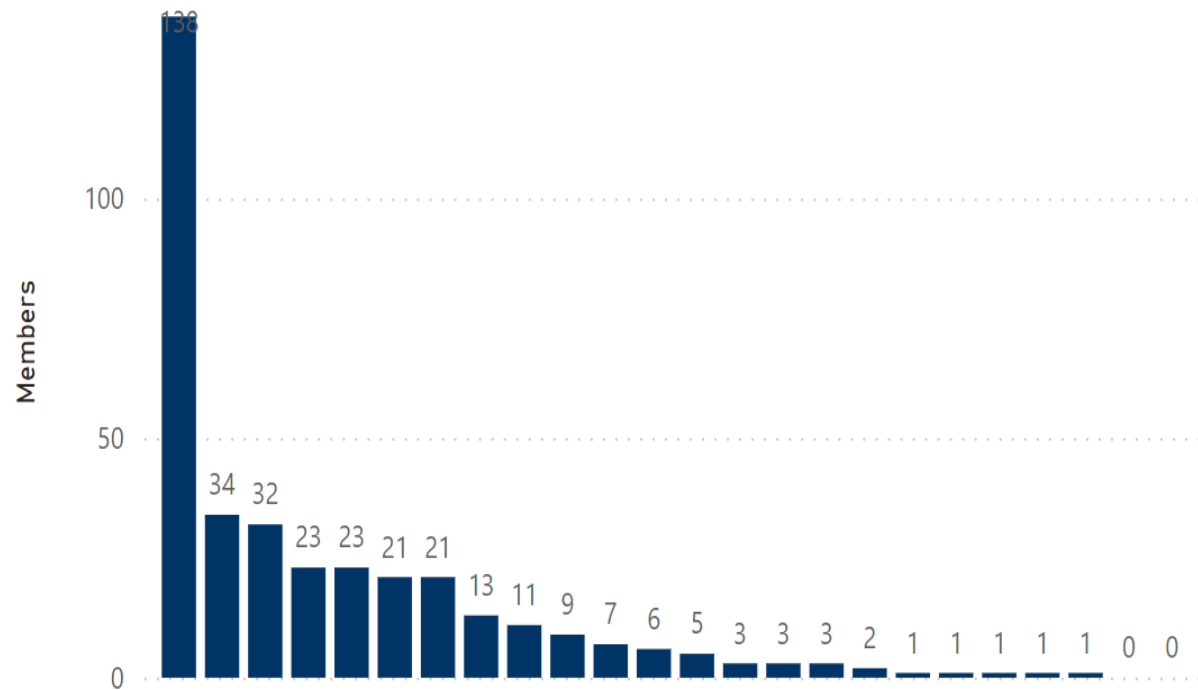
Avg Members with Recidivism per
CRSP - Network Avg

18

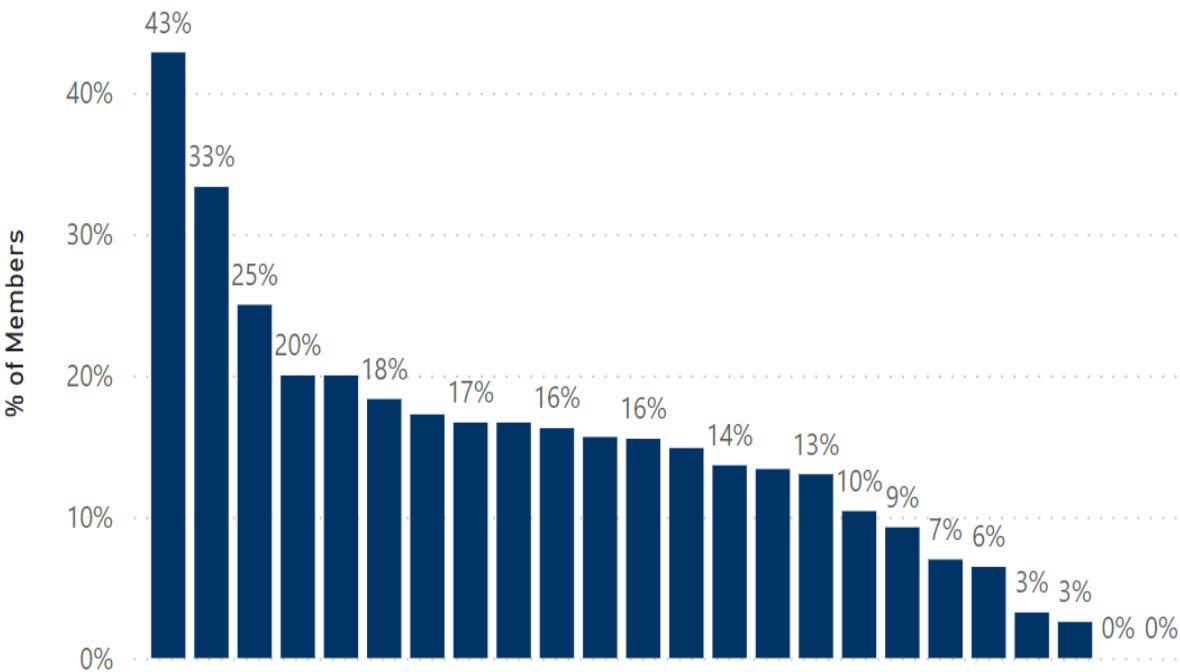
% of Members with Recidivism-
Network %

28%

Hospitalization Recidivism



% of Hospitalization Recidivism



Thank
You

