

ASK THE DOC



COVID-19 and Mental Health

Latest COVID-19 News



Dr. Shama Faheem is the Chief Medical Officer for the Detroit Wayne Integrated Health Network.

- The COVID-19 7-day average cases and test positivity has continued in 65 of 83 counties.
- MDHHS has released school guidelines on prevention measures, including universal masking, reducing transmission and days away from school.
- Pfizer recently announced that a Phase 2/3 trial showed its Covid-19 vaccine was safe and generated a "robust" antibody response in children ages 5 to 11.

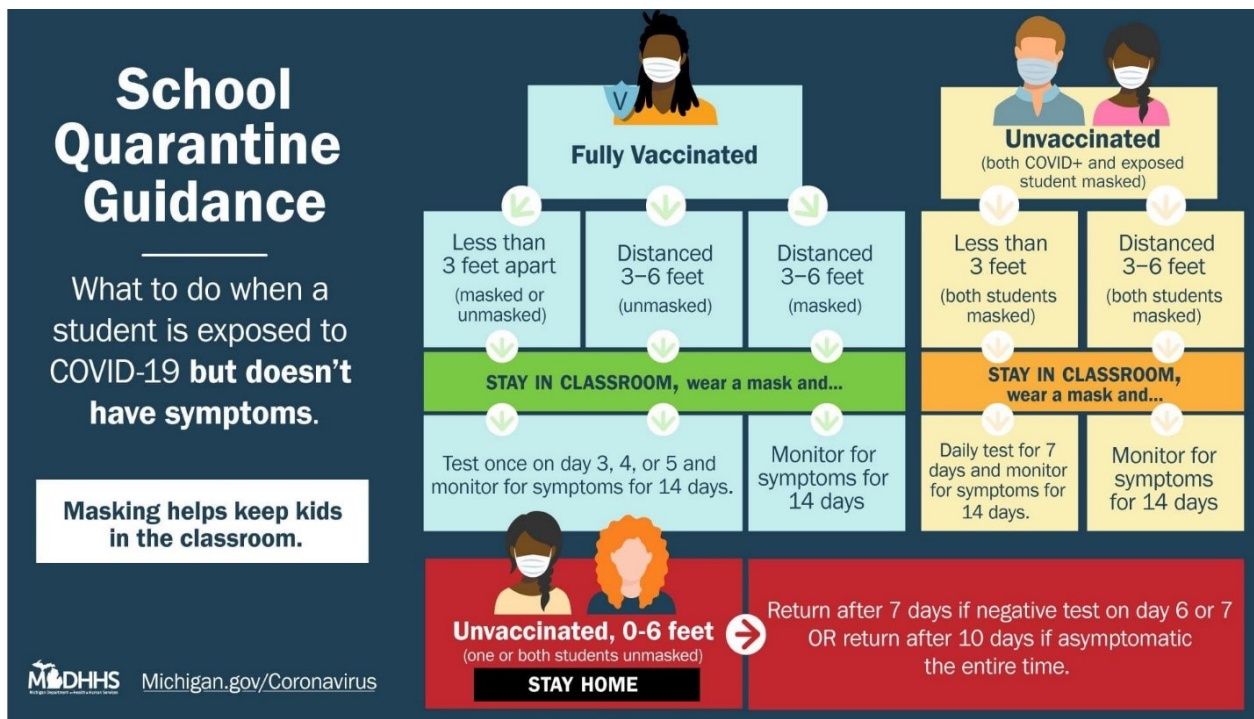
These are the first such results released for this age group for a US Covid-19 vaccine, and the data has not yet been peer-reviewed or published. Pfizer said it plans to submit to the US Food and Drug Administration for emergency use authorization soon. FDA officials have said that once data is submitted, the agency could authorize a vaccine for younger children in a matter of weeks. The trial included 2,268 participants ages 5 to 11 and used a two-dose regimen of the vaccine administered 21 days apart. This trial used a 10-microgram dose -- smaller than the 30-microgram dose that has been used for those 12 and older.

ASK THE DOC



COVID-19 and Mental Health

Latest COVID-19 News



The COVID-19 Pandemic continues and now is often labelled as the
"Pandemic of unvaccinated."

- Unvaccinated people are 17 times more likely to be hospitalized
- In August, COVID-19 related hospitalizations among children and adolescents increased 4x
- After Delta became the most predominant variant, fully vaccinated people had reduced risk of...

Infection 5X
Hospitalization >10X
Death >10X



COVID-19 and Mental Health

Latest COVID-19 News

When should patients with confirmed or suspected COVID-19 be advised to stay at home? Have an in-person clinical evaluation?

Home management is appropriate for most patients with mild symptoms (e.g., fever, cough, and/or myalgias without dyspnea), provided they can be adequately isolated, monitored, and supported in the outpatient setting. However, there should be a low threshold to clinically evaluate patients who have any risk factors for more severe illness, even if they have only mild symptoms.

What advice should be given to patients with known or presumed COVID-19 and are treating themselves at home?

We advise the following:

- Supportive care with antipyretics/analgesics (e.g., acetaminophen) and hydration
- Close contact with their health care provider
- Monitoring for clinical worsening, particularly the development of new or worsening dyspnea, which should prompt clinical evaluation and possible hospitalization
- Separation from other household members, including pets (e.g., staying in a separate room when possible and wearing a mask when in the same room)
- Frequent hand washing for all family members
- Frequent disinfection of commonly touched surfaces

Are any medications available to prevent COVID-19 following exposure?

In the United States, the Food and Drug Administration (FDA) has issued an emergency use authorization (EUA) to use the monoclonal antibody casirivimab-imdevimab to prevent SARS-CoV-2 infection in select individuals over 12 years of age who have had close contact with an individual with infection or who are at high risk of exposure to individuals with infection in an institutional setting.

ASK THE DOC



COVID-19 and Mental Health

COVID-19 DASHBOARD As of September 20, 2021

Michigan Confirmed Cases
988,725

Michigan COVID-19 Deaths
20,665

Wayne County Cases
(excluding Detroit): 121,759

Wayne County Deaths
(excluding Detroit): 2,838

Detroit City Cases: 60,001

Detroit City Deaths: 2511

7-day average of new cases: ~ 2616

Michigan case fatality rate: 2.1%

Wayne County fatality rate: 2.4%

Detroit Case fatality rate: 4.3%

Test positivity: 8.4%

Vaccination Dashboard

(For > 16 years)
1st dose tracker: 66.7%

Michigan (12 years and older)
First dose given: 5,293,414 (61.6 %)
Two doses given: 4,901,856 (57.0%)

Wayne County:
First dose given: 641,277 (69.8%)
Two doses given: 588,361 (64.0 %)

City of Detroit:
First dose given: 246,467 (44.3%)
Two doses given: 203,903 (36.6%)

On 5/13/2021, the Michigan COVID-19 Vaccination Dashboard began including the population 12 years and older. This increased the population denominator by 497,961 people (from 8,096,917 to 8,594,878) and thus decreased coverage percentage.