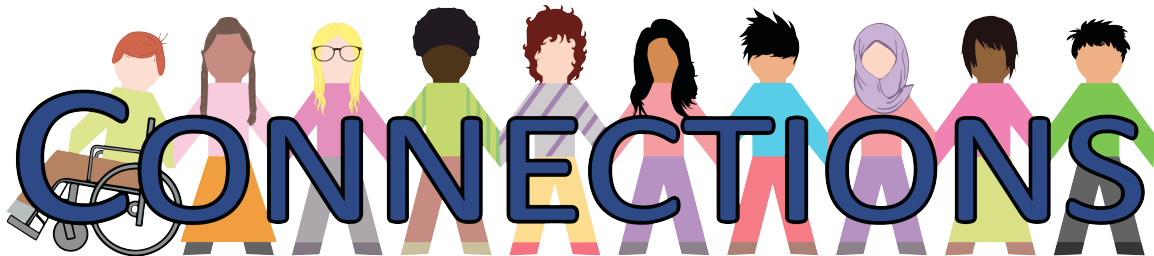




Children's
CROSS SYSTEMS
PARTNERSHIP
GLOSSARY & ACRONYM
LIST

JULY 2015



WAYNE COUNTY SYSTEM OF CARE
SYSTEMS IN ACTION FOR CHILDREN, YOUTH AND FAMILIES

Cross Systems Partnership Glossary & Acronym List

Systems Key:

Community Mental Health (CMH)	Developmental Disabilities (DD)
Department of Human Services (DHS)	Education (EDU)
Juvenile Justice (JJ)	Substance Abuse (SA)
Medical (Med)	

4Cs Child Care Coordinating Council

42 CFR (SA) Confidentiality of alcohol & drug abuse patient records

24 Hour On-Call Crisis Intervention (JJ) Care Management Organizations (CMO's) and Providers will be available to assigned juveniles and their families 24 hours per day, seven days a week, for crisis intervention and other emergencies. An on-call coverage system shall be developed and made available to the juvenile and their family.

AA African American
Alcoholics Anonymous
Arab American

AAPI (DHS) Adult-Adolescent Parenting Inventory

ABA (DD) Applied Behavior Analysis a discipline devoted to the understanding and improvement of human behavior through skill acquisition and the reduction of problematic behavior in a measurable and accountable manner.

Abbreviated Investigation (DHS) A shortened investigation conducted in those situations where CPS determines that the child abuse/neglect complaint is based on false or erroneous allegations. The purpose of an abbreviated investigation is to eliminate unnecessary steps on complaints that have no basis in fact.

ABS (DD) Adaptive Behavior Scale one of the best-researched and tested psychological measurement tools for evaluating adaptive behavior (daily functioning).

Acceptance Date (JJ) refers to the date the JAC legally accepted the case of a juvenile placed with the Department of Human Services for care and supervision per agreement with Wayne County or receipt of a referral for a Probation, Consent or At-Risk case.

ACCESS (CMH) Arab Community Center for Economic and Social Services

ACLA (DHS) Ansell Casey Lifeskills Assessment

ACMH (CMH) Association for Children's Mental Health

ACT (Assertive Community Treatment) (CMH) a comprehensive and integrated set of medical and psychosocial services provided on a one-to-one basis primarily in the client's residence or other community locations (non-office setting) by a mobile multidisciplinary mental health treatment team. The team provides an array of essential treatment and psychosocial interventions for individuals who would otherwise require more intensive and restrictive services. The team provides additional services essential to maintaining an individual's ability to function in community settings. This would include assistance with addressing basic needs, such as food, housing, and medical care and supports to also individuals to function in social, educational, and vocational settings.

Action (CMH) is a decision that adversely impacts a Medicaid beneficiary's claim for services due to:

- Denial or limited authorization of a requested service including the type or level of service
- Reduction, suspension, or termination of a previously authorized service
- Denial, in whole or in part, of payment for a service
 - Failure to make a standard authorization decision and provide notice about the decision within 14 calendar days from the date of receipt of a standard request for service
 - Failure to make an expedited authorization decision within 3 working days from date of receipt of a request for expedited service authorization
 - Failure to provide services within 14 calendar days of the start date agreed upon during the person centered planning (PCP) process and as authorized by the Prepaid Inpatient Health Plan (PIHP).
 - Failure of the PIHP to act within 3 working days from the date of request for an expedited appeal
 - Failure of the PIHP to provide disposition and notice of a local grievance/complaint within 60 calendar days of the date of the request

Active Efforts (DHS) Active efforts require the worker to thoroughly assist the family in accessing and participating in necessary services that are culturally appropriate and remedial and rehabilitative in nature while reasonable efforts simply offers referrals to the family, and leaves it to them to seek out assistance.

Acute Crisis Intervention Home (CMH) Short-term services provided in a protected residential setting under the supervision of a Qualified Mental Health Professional for the developmentally disabled adults who also have mental illness an are experiencing an acute exacerbation of the illness

ACYF (DHS) Administration for Children, Youth and Families

Ad Litem (DHS) A lawyer-guardian appointed for a child in a child protective proceeding to advocate for the child's best interests.

ADA Americans with Disabilities Act

ADD (Med/CMH) Attention Deficit Disorder

Additional Services (DHS) Any Services/Deliverables within the scope of the Contract, but not specifically provided under any Statement of Work, that once added will result in the need to provide the Contractor with additional consideration.

Adequate Notice of Action (CMH) is a written statement advising the beneficiary of a decision to deny or limit authorization of Medicaid services requested. Notice is provided to the Medicaid beneficiary on the same date the action takes effect or at the time of the signing of the individual plan of services/supports.

ADHD (Med/CMH) Attention Deficit Hyperactivity Disorder

Adjudication (JJ)

- When a juvenile has been found to be within the jurisdiction of the Court, following a plea or trial. In juvenile matters, this may be either a criminal or status offense [Juvenile Justice Services Handbook (JJSH) Policy Item 401.4].
- To hear and decide a case; to judge. An adjudicated delinquent is a youth who has been found guilty by a judge of committing a delinquent act. The court can commit an adjudicated juvenile or place the juvenile on community control. Retrieved from Leifert Law Website on July 8, 2011. <http://www.leifertlaw.com/lawyer-attorney-1169490.html>
- The court process (judges) determines if the juvenile committed the act for which he or she is charged. The term "adjudicated" is analogous to "convicted" and indicates that the court concluded the juvenile committed the act. Retrieved from Office of Justice Programs – U.S. Department of Justice Website on 7/8/2011. <http://www.ojp.usdoj.gov/>

ADL Activities of Daily Living

adm Admission

Administrative Complaint (JJ) Administrative Complaints are unanticipated circumstances precipitated by a specific case event(s) and/or allegation(s). Completed by the JAC, CMO or Calumet to document complaints specified in this policy and/or received from outside sources, including but not limited to the:

1. Juvenile
2. Parent or guardian
3. Court
4. CAFS
5. School
6. Contractor
7. Provider

Administrative Hearing/Review (DHS) an impartial or unbiased hearing of a decision made by DHS that an individual (e.g. perpetrator, provider, etc) believes is inappropriate.

Administrative Request for Reconsideration (CMH) Any written dissatisfaction or disagreement by a provider following an adverse decision of a Provider Dispute and a desire to appeal the dispute to the next level, if permitted by BHPI, Carelink, and/or Consumer, as applicable.

Adoption Assistance (DHS) includes Adoption Subsidy, Adoption Medical Subsidy and Nonrecurring Expenses.

Adoption Support Subsidy (DHS) provides financial support in the form of a monthly check to assist with the costs of care for an eligible child.

Adult Foster Care Home (CMH) (Adults ages 18 and Older) a general licensed living arrangement that may accommodate one or more residents. Resident in this setting have mild to no maladaptive behaviors and may or may not require assistance with community living and self care tasks. Specialized services can be arranged and provided in this setting if indicated.

Advance Notice of Action (CMH) is a written statement advising the beneficiary of a decision to reduce, suspend or terminate Medicaid services currently provided mailed to the Medicaid beneficiary at least 12 calendar days prior to the proposed date the action is to take effect.

Adverse Action (CMH) A denial, suspension, reduction or termination of mental health services, except as ordered by physician's determination of absence of medical necessity.

AEB As Evidenced By

AED (EDU) Academy for Educational Development

AFC Adult Foster Care

AFCARS (DHS) Adoption and Foster Care Analysis and Reporting System

AFPRR (DHS) Adoption Foster Parent Recruitment/Retention

AG (EDU) Annual Goal

Agency (CMH) Detroit Wayne County Community Mental Health Agency, a community mental health services program established pursuant to the Michigan Mental Health Code

Aggravated Circumstances (DHS) Under ASFA 101(a), 42 U.S.C. 671(a)(15)(D)(i), “reasonable efforts to reunite children with their parents” are not required if “the parent has subjected the child to aggravated circumstances (as defined in state law)”. In Michigan, aggravated circumstances include but are not limited to abandonment of a young child, criminal sexual conduct, battering, torture, or other severe physical abuse, loss or serious impairment of an organ or limb, life threatening injury, etc.

AI (CMH/EDU) Autistic Impairment

AIMS (Med) Abnormal Involuntary Movement Scale

AKA Also Known As

AMA Against Medical Advice

AMFG (CMH) Adolescent Multi Family Groups

AOD (JJ) refers to Alcohol and Other Drugs.

ATOD (SA) Alcohol, Tobacco and Other Drugs

APD (DHS) Advanced Planning Document

APE (EDU) Adapted Physical Education

APGAR (Med) Appearance, Pulse, Activity, Respiration Score

Appeal (CMH) In relation to recipient rights, a process established by MDCH to provide a mechanism for prompt reporting, review, investigation, and resolution of apparent or suspected violations of the rights guaranteed by the Michigan Mental Health Code.

APS Adult Protective Services

ARR Application for Renewal and Recommendation

Assessment and Assignment Packet (JJ) is compiled by the JAC Intake Specialist and given to the CMO, to assist in the development of the “Initial Treatment Plan of Care”.

ASD (CMH) Autism Spectrum Disorder

ASFA (DHS) Adoption and Safe Families Act

ASI (SA) Addiction Severity Index

ASQ/ASQ-SE (CMH) Ages and Stages Questionnaire/social emotional

Assessment (DHS) process by which CPS agency determines whether the child or other persons involved in the report of alleged maltreatment is in need of services.

AT (EDU) Assistive Technology - The goal of using assistive technology (AT) is to assist a child with a disability to increase, maintain, or improve functional capabilities.

AT (CMH) Activities Therapist

AT (EDU) Administrative Transfer, Assessment

ATO Alternative Treatment Order

Audit (JJ/CMH) is the examination of case records or accounts of the JAC’s, CMO’s or any Provider agency.

Aut. (CMH/DD/EDU) Autistic

Authorization (CMH) A decision rendered by a Qualified Professional who has been delegated the authority by Carelink, to approve a request for covered clinical services as meeting the criteria of Medical Necessity.

Authorized Representative (CMH) any individual designated by a member or appointed by a court to represent his or her interest, including, but not limited to, a practitioner, spouse, parent, family member, or legal representative (such as a guardian, executor, or attorney).

Authorized Services (CMH) Services deemed medically necessary and eligible for reimbursement based on the contract between the provider and the Network. All funded services are authorized by Carelink, but only a specific subset of available services require prior authorization.

AWBS (CMH) Adult Well Being Services

AWOL (JJ) Absent without Leave

AWOLP (DHS) Absent without Legal Permission

AYP (EDU) Adequate Yearly Progress

BAL (SA) Blood Alcohol Level

BARJ (Balanced and Restorative Justice) (JJ) is an accountability and community safety model. BARJ recognizes victim, community, and offender restoration.

BCAL Bureau of Child and Adult Licensing

BCP (DHS) Building Community Partners

beh Behavior

Beneficiary (CMH) is an individual who has been determined eligible for Medicaid and who is receiving services through a PIHP/CMHSP

Benefits (DHS) All financial compensation due to an individual (usually a state ward or a DHS supervised court ward). These funds are generally paid by governmental agencies and includes, but is not limited to, benefits from Retiree, Survivor and Disability Insurance (RSDI), Supplemental Security Income (SSI), Veterans Administration (VA), Worker's Disability Compensation, railroad retirement, federal civil service retirement, and/or any other retirement or insurance benefits.

Best Interests (JJ) A doctrine used by most Courts to determine a wide range of issues relating to the well being of children. This standard for initially awarding custody takes several factors into consideration including, but not limited to: primary caregiver, fitness; character and reputation, child preference, material opportunity, opportunity for visitation, etc. (Retrieved from <http://www.mylawyer.com/familylaw/childcustody/bestinterests.htm>).

B/F Black Female

BH (CMH) Behavioral Health

BIA (DHS) Bureau of Indian Affairs

bid (Med) Twice per Day

bio Biological/biology

BIP (EDU) Behavior Intervention Plan

Birth Match (DHS) occurs when a new child is born to a parent who has previously had parental rights terminated in a child protective proceeding, caused the death of a child due to abuse and/or neglect or has been manually added to the match list. When a birth match occurs, an unassigned complaint is automatically generated in SACWIS and the local office supervisor is notified about the complaint.

B/M Black Male

BM Bowel Movement

BMC (CMH) Behavior Management Committee

BMP (CMH) Behavior Management Plan

bro Brother

Bulletin (DHS) a posting about a child. Bulletins include a summary about the child and child's photograph.

Bureau of Substance Abuse Services (BSAS) (SA) is a branch of the City of Detroit Health Department. They are authorized by the Michigan Department of Community Health to provide substance abuse funding for the City of Detroit.

Bx (CMH) Behavior

CA (DD) Chronological Age

CAC (SA) Certified Addictions Counselor (Levels I & II)

CAC Child Advocacy Center

CAFAS (CMH/DHS/JJ) Child and Adolescent Functional Assessment Screening

CAFS Child & Family Services

CAN (DHS) Child Abuse/Neglect

CANS (DHS) Child Assessment of Needs and Strengths

Calumet Center (JJ) is a privately operated, secure detention facility, under contract with Wayne County.

CAP (Corrective Action Plan) (CMH) Refers to any informal or other action plan (other than a formal Plan of Correction) requested of a provider or imposed by BHPi to address areas in which BHPi requires a Provider to perform specific corrective actions or to take certain actions to improve it's performance in those instances in which neither CareLink, ConsumerLink, nor BHPi determine the provider to be in material breach of contract.

Capitation (CMH) A fixed amount paid per month per Person to the MCPN for Covered Services.

CAR (DHS) Central Adoption Registry

Care Management Organization (CMO) (JJ) is a Wayne County contracted agency which is the primary responsible entity for the provision and monitoring of covered services to Wayne County youth and their families.

Care Management Track (CMT) (JJ) also referred to as Rate Band, refers to the level of care, intensity and cost of services for a juvenile and family, based on assessment findings and disposition of the court.

Caregiver/Caretaker (DHS) A person responsible for the care and supervision of the alleged child victim.

CARF (CMH) Commission on Accreditation of Rehabilitation Facilities

Case Management (JJ) is the process through which the CMO provides, assesses, manages, advocates, negotiates, coordinates, contracts for, reports on and monitors necessary services and resources to fulfill the Treatment Plan of Care for juveniles and their families.

Case Manager (JJ) is the assigned social worker, who is responsible for ensuring the initial assessment of the youth and his/her family's needs, the arrangement or provision of services to meet those identified needs and the ongoing monitoring of the services delivered to ensure compliance with the youth's authorized Treatment Plan of Care and Court requirements, as well as quality assurance.

Case Plan (DHS) The casework document that outlines the goals, legal status, demographics about the case and tasks necessary to be achieved in order to reduce the risk of maltreatment. The Case Plan includes all assessments, family connection requirements, service agreements and outcomes based on services provided or based on barriers to receiving services. Michigan policy refers to the Case Plan as the Initial or Updated Service Plan.

Case Type (DHS) The kind of case or program/service offered by DHS. Case types include adoption, prevention, investigation, foster care, Juvenile Justice dual ward, Juvenile Justice IV-E, ongoing, etc.

Category or Disposition Category (DHS) Based on the outcome of the completed investigation, CPS must determine if there is a preponderance of evidence of child abuse or neglect and the dispositions category is assigned to the case. Category is determined by a combination of evidence, risk level and the safety assessment. There are five possible disposition categories; each category value indicates where a preponderance of evidence exists and the action to be taken.

- **Category I:** A case that was investigated where CPS found a preponderance of evidence of child abuse and/or neglect and the Child Protection Law or policy requires a petition for court action. This is a petition case.
- **Category II:** Indicates that Children's Protective Service's are required. The department determines that there is a preponderance of evidence of child abuse or neglect, and the Structured Decision Making Tool (the risk assessment) indicates a high or intensive risk of future harm to the child. CPS must open a PS case, provide services and list the perpetrator on the Central Registry.
- **Category III:** Indicates that community services are needed. The department determines that there is a preponderance of evidence of child abuse or neglect, and the Structured Decision Making Tool (risk assessment) indicates a low or moderate risk of future harm to the child. The department must assist the child's family in receiving community based services commensurate with the risk to the child. The person who harmed the child is not listed on central registry.
- **Category IV:** Indicates that community services are recommended. Following a field investigation, the department determines that there is not a preponderance of evidence of child abuse or neglect. The department must assist the child's family in voluntarily participating in community-based services commensurate with the risk to the child.
- **Category V:** Indicates that services are not needed. This category is used in cases in which CPS is unable to locate the family, no evidence of child abuse and/or neglect (CA/N) is found, or the Family Division of Circuit Court is

petitioned to order family cooperation during the investigation but declines, and the family will not cooperate with CPS. Further response by the department is not required.

CBC (CMH) Cancel by Client

CBT (CMH) Cancel by Therapist
Cognitive Behavioral Therapy/Treatment

CCH (CMH) Contracted Community Hospital that provides acute inpatient and/or partial hospitalization services by contract with DWMHA.

CCI (DHS) Child Caring Institution

CCISC (SA) Comprehensive Continuous Integrated System of Care

CCP Child Care Provider (DHS) An owner, operator, employee, or volunteer of a child care organization or of an adult foster care location authorized to care for a child.

CDC (Med) Center for Disease Control

CEC (EDU) Council for Exceptional Children

CEN (EDU) Center for Educational Networking

Central Registry (DHS) The system maintained at the department that is used to keep a record of all reports filed with the department in which relevant and accurate evidence of child abuse or neglect is found to exist. The Central Registry contains both a Historical Registry and a Perpetrator Registry. The Perpetrator Registry is a list of perpetrators who have been provided written notification of their names having been placed on the Central Registry. The Historical Registry is a list of complaints entered on the Central Registry prior to 8/1/92, which identifies perpetrators who have not been provided written notification of their names having been placed on the Central Registry.

Central Registry Case (DHS) A CPS case that the department classifies under sections 8 and 8d as category I or category II. For a CPS case that was investigated before July 1, 1999, central registry case means an allegation of child abuse or neglect that the department substantiated.

CEO Chief Executive Officer

Certification (CMH) a process of evaluating/screening clients to determine and approve appropriate and clinically necessary services for inpatient psychiatric admission, and other prior authorized services, which includes certifying appropriateness of all inpatient hospital and physician services related to the admitting mental health

diagnosis, including laboratory and x-ray services, medications, etc. Any inpatient psychiatric admission not certified by the CMH is not a benefit of the Medicaid program.

CEU Continuing Education Unit

CFAC (CMH) Consumer Family Advocate Council

CFSR (DHS) Child and Family Services Review

CFT Child & Family Team

CHAMPS (DHS) Community Health Automated Medicaid Processing System

CHCs Community Health Centers

Child and Adolescent Functional Assessment Scale (CAFAS) (JJ/CMH) used to assess the degree of impairment in children and adolescents, ages 7 to 17, with emotional behavioral or substance use symptoms/disorders. It is a clinician-rated measure to assess clinical progress or outcome.

Child Care Fund (CCF) (JJ) a cost-sharing program between the State and the County. The CCF operates on a reimbursement basis. The County incurs the expenses and then bills the State for 50% reimbursement of eligible expenditures.

Child Mental Health Professional (CMH) a person who is trained and has one year of experience in the examination, evaluation and treatment of minors and their families and who is one of the following:

- A physician
- A psychologist
- A certified social worker or social worker
- A registered nurse

OR

A person with at least a bachelor's degree in a mental health related field from an accredited school who is trained, and has three years (3) of supervised experience in the examination, evaluation and treatment of minors and their families.

A person with at least a master's degree in a mental health related field from an accredited school who is trained and has one year of experience in the examination, evaluation and treatment of minors and their families (Reference R 330.2105).

Note: For persons hired after July 19, 1990 the program is clinically supervised by a child mental health professional who has at least a master's degree in a mental health related field and three years of clinical experience working with minors and their families.

Child Neglect (DHS) Harm or threatened harm to a child's health or welfare by a parent, legal guardian, or any other person responsible for the child's health or welfare that occurs through either of the following

- (i) Negligent treatment, including the failure to provide adequate food, clothing, shelter, or medical care.
- (ii) Placing a child at an unreasonable risk to the child's health or welfare by failure of the parent, legal guardian, or other person responsible for the child's health or welfare to intervene to eliminate the risk when that person is able to do so and has, or should have, knowledge of the risk.

Children's Diagnostic and Treatment Services (CMH) a program operated by or under contract with a Community Mental Health Services Program which provides examination, and referrals for minors, including emergency referrals, that provides or facilitates treatment for minors, and that has been certified by the MDCH.

Children's Rights Settlement Agreement (DHS) In August 2006, the national nonprofit organization Children's Rights filed a class action lawsuit against the State of Michigan in the US District Court for the Eastern District of Michigan. The lawsuit alleged that systemic problems in Michigan's child welfare system had harmed children placed in the State's custody. On October 24, 2008, in an effort to avert a civil trial, the two parties finalized a settlement which outlines how the State must modify the structure of foster care in Michigan and requires that the automated system must be SACWIS compliant by October 2012.

CI (CMH/Education) Cognitive Impairment

CI (DHS) Client Index

cl Client

Classification (JJ) refers to the security level a juvenile is eligible for, based on a combination of risk assessment score and the most serious offense on his/her record, at the time of disposition; and an assessment of juvenile and family strengths and needs.

Clinical Appeal (CMH) A request by a member, member-designated representative, or provider to review an adverse medical necessity determination made in response to a request for services. The Clinical Appeal process is described in the Provider Manual.

CLS Community Living Supports

clt Client

CM Case Manager/Management or Change Management

CM (Contingency Management) (SA) an approach to treatment that maintains that the form or frequency of behavior can be altered through a planned organized system of positive and negative consequences. CM assumes that neurobiological and environmental factors influence substance use behaviors and the consistent application of reinforcing environmental consequences can these behaviors.

CMH Community Mental Health

CMHP (CMH) Child Mental Health Provider

CMO (JJ) Care Management Organization

CMS Centers for Medicare and Medicaid Services

C/O Care Of

c/o Complaint Of

COC Community Opportunity Center

COD (Co-occurring Disorder) (SA/CMH) refers to co-occurring substance use (abuse or dependence) and mental disorders. Clients said to have COD have one or more mental disorders as well as one or more disorders relating to the use of alcohol and/or other drugs. See dually disordered.

Collateral Contacts (DHS) aka Collaterals; Contacts made by the agency to a reliable person that provides credible accurate information such as proof regarding the suspicions of the complaint. Collateral sources may include, but are not limited to, the complainant, relatives, neighbors, school personnel, the family doctor, other household members, absent parents, the police, references given by the parents or alleged perpetrator, or anyone else with reliable information. CPS must document the information given by collateral sources with affidavits, written records, or narratives in the case record.

Commencement Contact (DHS) requires contact with someone other than the reporting source to assess the safety of the alleged child victim. The preferred way to commence an investigation is to make contact with the alleged victim. The Child Protection Law (MCL 722.628) requires DHS to commence the investigation of a complaint no later than 24 hours after receipt of the complaint, although the seriousness of the alleged harm may dictate an immediate response.

Commitment (DHS) Upon completion of a parental release, the court issues an order terminating the rights of the releasing parents. When all parental rights have been terminated, the court may issue an order committing the child to DHS whereupon DHS must accept the commitment. Upon release and commitment, the child becomes a state ward.

Community Mental Health Services Program (CMH) A program operated under Chapter 2 of the Michigan Mental Health Code- Act 258 of 1974 as amended.

Complaint/Allegation (DHS) Written or verbal communication to the department of an allegation of child abuse or neglect. Complaint/allegation in Michigan is interchangeable with them “report” in the Child Protection Law.

Complaint (CMH) An oral or written statement made to the Office of Recipient Rights alleging violation of a Mental Health Code protected right.

Concurrent Planning/Goal (DHS) Identifies alternative forms of permanency by addressing both reunification or legal permanency with a new parent or caregiver if reunification efforts fail.

Confidential Case/Intake (DHS) A complaint/case to which access is limited. A confidential case contains information regarding a DHS employee or DHS employee’s relative, prominent member of the community or a high profile media case. Access to information in the complaint/case is restricted.

Consumer (CMH) Recipients of services designated by two types: Primary and Secondary. Primary refers to the recipient of services. Secondary refers to family members of the primary recipient.

Contracted Provider (CMH) An individual or entity participating in the Provider Network pursuant to a contract with CareLink, and/or BHPi to provide Covered Services.

Controlled Substance (JJ) includes illegal drugs and any medication available only by medical prescription and not prescribed for the user.

COO Chief Operating Officer

Co-Occurring Disorders (CMH/SA) When used in the context of Persons, this term refers to co-occurring psychiatric and/or substance use disorders

COP (CMH) Children’s Outpatient

Covered Services under MCPN (CMH) Contract Specialty supports and services as described in Appendix B of DWMHA/MCPN contract, as amended.

COW Committee of the Whole

CP Cerebral Palsy

CPA (DHS) Child Placing Agency

CPN (DHS) Child Placement Network

CPP Child Placement Providers

CPS (DHS) Child Protective Services

CPSS (CMH) Certified Peer Support Specialist

Credentialing (CMH) the review process used by CareLink to determine if a practitioner, group, or facility that has applied to participate in a provider network meets criteria for inclusion. This review process is described in the CareLink manual.

Crisis Observation Care (CMH) is a hospital based service less than 24 hours in duration involving rapid diagnosis treatment and stabilization of an individual with a psychiatric or substance abuse emergency and that results in sufficient amelioration of the situation to allow the person to be discharged and transferred to an outpatient care service (Medicaid Provider Manual).

Crisis Residential Services (CR) (CMH) are intended to provide a short-term alternative to inpatient psychiatric services for beneficiaries experiencing an acute psychiatric crisis when clinically indicated. Services may only be used to avert a psychiatric admission or to shorten the length of an inpatient stay (Medicaid Provider Manual)

CRP Crisis Residential Program

CSC Child Screening Center

CSM Case Manager/Management

CSN Community Support Network

CT Community Team

CTFPR (DHS) Children's Trust Fund Prevention

Cultural Competency (CMH) is an acceptance respect for difference, a continuing self-assessment regarding culture, a regard for and attention to the dynamics of difference, engagement in ongoing development of cultural knowledge and resources and flexibility within the service models to work towards better meeting the needs of all minority populations.

CW (DHS) Child Welfare

CWCCU (DHS) Child Welfare Contract Compliance Unit

Day Treatment (JJ) programs are used to support in-home community-based care, or to assist juveniles with reintegration. Day Treatment offers academic/vocational instruction, center-based or in community schools, charter school, etc., individual, group and family counseling, group interaction, family involvement counseling, support group social activities, life skills preparation, recreation, meals, evening and weekend surveillance. Early morning and evening transportation is usually provided to and from the program. The program provides services and operates five and one-half days a week, with additional tracking/surveillance on weekends and holidays.

d/c discontinue or discharge

DC 0-3 (CMH) Diagnostic Coding for 0-3 age group

DCH Department of Community Health

DCI Development Centers, Inc.

DD Developmental Disability or Developmentally Disabled

DD Dually Disordered (SA) having been diagnosed with two disorders, for example a substance use disorder and a mental health disorder.

DDC (SA) dual diagnosis capable Of or pertaining to programs that address co-occurring mental and substance-related disorders in their policies and procedures, assessment, treatment planning, program content, and discharge planning.

DDE (SA) Dual Diagnosis Enhanced Of or pertaining to programs that have a higher than average level of integration of substance abuse and mental health treatment services. These programs are able to provide primary substance abuse treatment to clients who are, compared with those treatable in DDC programs, more symptomatic and/or functionally impaired as a result of their co-occurring mental disorder.

DDHWP (Med) Detroit Department of Health and Wellness Promotion

DD/MI Dually Diagnosed: Mentally Ill

DECA (EDU) Deveraux Early Childhood Assessment

De-escalation (JJ) refers to a decrease in security level for a juvenile's placement.

Delinquent Act (JJ) An act committed by a juvenile, for which an adult could be prosecuted in a criminal court, but when committed by a juvenile is within the jurisdiction of the juvenile court. Delinquent acts include crimes against persons, crimes against property, drug offenses, and crimes against public order, when juveniles commit such acts.

Denial of Authorization (CMH) An adverse decision made by a psychiatrist regarding a request to authorize services, after appropriate evaluation of relevant clinical information.

Dependent Living Setting (CMH) a) an Adult Foster Care Facility b) a nursing home c) a Home for the Aged d) Child Caring Institution

Designated Proceeding (JJ) a proceeding in which the prosecutor has designated, or has asked the Family Division to designate the case for trial in the Family Division in the same manner as an adult.

DETOX (SA) Detoxification

Developmental Disability (CMH) is either of the following (a) if applied to an individual older than 5 years, a severe, chronic condition that meets all of the following requirements:

- Is attributable to a mental or physical impairment or combination of mental and physical;
- Is manifested before individual is 22 years old;
- Is likely to continue indefinitely;
- Results in substantial functional limitations in 3 or more of the following areas of major life activity:
 - Self-care
 - Receptive and expressive language
 - Learning
 - Mobility
 - Self-direction
 - Capacity for independence
 - Economic self-sufficiency

- Reflects the individual's need for a combination and sequence of special, interdisciplinary, or generic care, or other services that is of lifelong or extended duration and are individually planned and coordinated

If applied to a minor from birth to age 5 a substantial developmental delay or specific congenital or acquired condition with a high probability of resulting in developmental disability as defined in subdivision (a) if services are not provided.

Designated Proceeding (JJ) a proceeding in which the prosecutor has designated, or has asked the Family Division to designate the case for trial in the Family Division in the same manner as an adult.

DHS Department of Human Services

Diagnostic Services Manual – Fourth Edition (DSM-IV) (CMH) Diagnostic Criteria for the most common mental disorders including: description, diagnosis, treatment, and research findings. The DSM-IV, published by the American Psychiatric Association, Washington D.C., 1994, is the main diagnostic reference of Mental Health professionals in the United States of America.

disch. Discharge

Discretionary Override (DHS) The risk level, as automatically determined by the risk assessment, may be overridden by the user. There are two types of overrides of the risk level; mandatory and discretionary. Mandatory overrides are required overrides to intensive risk based on specific scenarios. A discretionary override is based on unique case circumstances that warrant a different risk level than calculated by the system and must have supervisory approval.

Disposition (JJ) Definite action taken or treatment plan decided on or initiated regarding a particular case after the judicial decision is made. Commonly used case dispositions are coded into the following categories:

- Probation - Cases in which youth were placed on informal/voluntary or formal/court-ordered probation or supervision.
- Commitment/Placement - Cases in which youth were placed in a residential facility for delinquents or were otherwise removed from their homes and placed elsewhere.
- Waived to criminal court - Cases that were transferred to criminal court as the result of a waiver hearing in juvenile court.
- Dismissed - Cases dismissed (including those warned, counseled, and released) with no further action anticipated. Among cases handled informally, some cases may be dismissed by the juvenile court because the matter is being handled in another court.

Disposition (DHS) (of intake or investigation) Making a final determination and taking appropriate action in the system regarding an intake or investigation. For intake, this involves making a determination as to whether:

- the intake should be referred for DHS services such as prevention services or guardianship.
- the intake should be referred to community resources.
- the complaint should be
 - transferred to another jurisdiction for investigation of the complaint (e.g. law enforcement, American Indian Tribal Unit, another state, etc.).
 - assigned for field investigation.
 - rejected.

For an investigation, disposition occurs when a final determination has been made whether a preponderance of evidence exists and this determination has been entered in the system.

Disposition Checklist (DHS) to provide a quick checklist for the user to ensure that all appropriate activities related to the case have been addressed. Generally, all items on the checklist must be completed before the case is dispositioned.

Dispositional Hearings (JJ) are conducted to determine what measures the Court will take concerning juveniles who are properly found within the jurisdiction of the Court, following a plea or trial. Further, when applicable, the Court will also consider what measures the Court will take concerning the parent or guardian.

Dispute Resolution Processes (CMH) the system of structured impartial grievance and appeal procedures that a consumer of public mental health services may follow when in dispute with an Agency contractor regarding denial, reduction, suspension or termination of services. These are:

- Internal-Local Dispute Resolution Processes of clinical second opinion and reconsideration review and Agency appeal mechanisms (for non-Medicaid recipients) and
- External Medicaid Fair Hearings and MDCH Alternate Dispute Resolution Procedures

DLEG Department of Labor and Economic Growth

DMH Department of Mental Health

DNS Did Not Show

DOC (DHS) Determination of Care; specialized pay rates that are based on the extraordinary needs of the child, and/or the additional parenting skill needed to raise the child. In instances in which the age appropriate foster care payment does not cover extraordinary care or expenses that may be required of a foster parent, a determination of care supplement may be approved by DHS. Examples of reasons for determination of care supplements include physical handicaps requiring foster parents to provide measurably greater supervision and care and special psychological or psychiatric needs requiring extraordinary time and attention.

DOJ Department of Justice

DOL Department of Labor

DPH Department of Public Health

DS Down's Syndrome

DSM-IV and DSM-IV-TR (CMH) Diagnostic and Statistical Manual IV and Text Revision

DTs (Delirium Tremors/Tremens) (SA) a state of confusion accompanied by trembling and vivid hallucinations. Symptoms may include restlessness, agitation, trembling, sleeplessness, rapid heartbeat, and possibly convulsions. Delirium tremens often occurs in people with alcohol use disorders after withdrawal or abstinence from alcohol.

Dual Recovery Groups (SA) therapy groups in which recovery skills for co-occurring disorders are discussed.

Dual Ward (DHS/JJ) A youth who is a state ward both as an abuse/neglect foster care ward as well as being adjudicated as delinquent in Michigan's juvenile justice program.

DUI Driving Under the Influence

DWMHA Detroit Wayne Mental Health Authority (CMH) The community mental health services program established and administered pursuant to provision of the State Mental Health Code, for the purpose of providing a comprehensive array of mental health services appropriate to the condition of individuals who are Wayne County residents, regardless of ability to pay.

DWI Driving While Impaired

dx Diagnosis

EAP Employee Assistance Program

Early and Periodic Screening, Diagnosis and Treatment Program (EPSDT) (Med) a Medicaid supported health program for children, adolescents and young adults (ages 0-21). These services include the following:

- Health and developmental history
- Developmental/behavioral assessment
- Physical assessment
- Physical examination
- Blood press
- Immunization
- Health education
- Nutritional, hearing, vision, dental assessments
- Lead toxicity

And appropriate counseling for parents/guardians regarding these health issues for their children, adolescents or young adults.

Early On (DHS/EDU) a program designed to coordinate early intervention and other services for families who have children (ages 0-36 months) experiencing developmental delays or who have disabilities or special needs.

EBT (DHS) Electronic Benefit Transfer

ECE (EDU) Early Care and Education

ECERS (EDU) Early Childhood Environmental Rating System

ECIC (EDU) Early Childhood Investment Corporation

ECP (EDU) Early Childhood Program

ECDD (EDU) Early Childhood Developmental Delay

ECS (EDU) Early Childhood Service

EAA Educational Achievement Authority

Effective Freedom (CMH) The realization of social citizenship and full community membership. Citizens are able to build upon basic freedoms- to effectively unlock the potential of liberty- by making choices, pursuing personal goals, engaging in productive activity, establishing a wide range of associations and relationships, participating in community events, and living in real homes.

EI (EDU) Early Intervention
(EDU) Emotionally Impaired

EIP (SA) Early Intervention Program to serve person infected with HIV or at risk of developing HIV/AIDS

Electronic Monitoring (EM) (JJ) is a tethering technology that allows a juvenile to be “tracked” while living at home. The technology involves a home base unit that is installed in the juvenile’s home. The base unit is linked via telephone line (land or cellular) to a standard or GPS tethering unit. A bracelet-like device is fastened to the juvenile’s ankle. Juvenile’s compliance to curfew guidelines is communicated to CMO Case Manager via email.

Eligible Juvenile (JJ) means the following:

- 1) **At Risk** - Juveniles who are in danger of entry into the juvenile justice system, as defined in Wayne County Ordinance 96-86 [Revised] 02/16/96.
- 2) **Probation** - Adjudicated juveniles who have been placed on Probation by the Court, pursuant to 1939 PA 288, MCL 712A.2. Juveniles may be placed in either the Court’s Intensive Probation or the CFS Probation services through a CMO; they reside and receive services in the community.
- 3) **Committed** - Adjudicated juveniles whose delinquent cases have been disposed by the Court to the Wayne County Department of Children and Family Services for care and supervision

ELL (EDU) English Language Learners

Emergency Evaluation (CMH) means an immediate face-to-face assessment by a child mental health professional available for the purpose of determining if a minor is emotionally disturbed, as defined in Section 498B of the Act, and requires immediate intervention because of any of the following situations:

- The minor is dangerous to himself/herself or others;
- The minor will not allow for the provision of care to meet his/her basic needs;
- The minor has experienced a severe emotional trauma which is identified by his or her parent, or when the parent or guardian cannot be immediately contacted by a person having physical custody of the minor. (Reference R 330.2105)

Emergency Referral (CMH) means a referral for the purpose of having services provided immediately to a minor or the minor’s family pursuant to R 330.2006 (Reference R 330.2105)

Note: *If the minor is located in the county but is a resident of a county served by another community mental health board, the minor may be referred to the appropriate*

community mental health board after the minor's immediate needs for protection or security are met.

Emergency Situation (CMH) A situation in which an individual is experiencing a serious mental illness or a developmental disability, or a child experiencing a serious emotional disturbance, and one of the following apply:

1. The individual can reasonably be expected within the near future to physically injure himself, herself, or another individual, either intentionally or unintentionally.
2. The individual is unable to provide himself or herself food, clothing, or shelter, or to attend to basic physical activities such as eating, toileting, bathing, grooming, dressing, or ambulating, and this inability may lead in the near future to harm to the individual or another individual.
3. The individual's judgment is so impaired that he or she is unable to understand the need for treatment and, in the opinion of the mental health professional, his or her continued behavior as a result of the mental illness, developmental disability, or emotional disturbance can reasonably be expected in the near future to result in physical harm to the individual or another individual.

Emotional Disturbance (CMH) means mental illness or a severe or persistent emotional condition characterized by seriously impaired personality development, individual adjustment, social adjustment, or emotional growth which is demonstrated in behavior symptomatic of that impairment. (Reference Michigan Mental Health Code 330.1498 (b) (9))

Encounter (CMH) A face to face meeting between a covered person and health care provider where services are delivered and/or a document submitted in a claim format specified by DWMHA that documents the services and costs of services provided to a consumer.

Enhanced Health Services (CMH) Those services beyond the responsibility for the Person's health plan, that are provided for rehabilitative purposes to improve the Person's overall health and ability to care for health-related needs. This includes nursing services, dietary/nutrition services, maintenance of health and hygiene, teaching self-administration of medication, care of minor injuries or first aid, and teaching the Person to seek assistance in case of emergencies. Services must be provided according to the professional's scope of practice and under appropriate supervision. Enhanced health services must be carefully coordinated with the Person's health care plan.

EO (EDU) Early On

EOB (Explanation of Benefits) (CMH) A statement mailed to providers explaining why a claim was or was not paid.

EP Epilepsy

EPS Extrapyrimal Symptoms

EPSDT (Med) Early Periodic Screening, Diagnosis, and Treatment a Medicaid service for prenatal care and for children birth through age twenty-one.

EQR External Quality Review

ERM (EDU) Evaluation Review Meeting

Escalation (JJ) refers to an increase in security level for a juvenile's placement setting, i.e. community based to non-secure or non-secure to secure.

Escape (JJ) means to leave without lawful authority, fail to return to custody when required, or when a juvenile's whereabouts cannot be accounted for, for any period of time. The definition of escape applies to all security levels.

ESL (EDU) English as a Second Language

ESY (EDU) Extended School Year

ETOH Alcohol

ETV (DHS) Education and Training Voucher Program

Eval Evaluation

Fa Father

Facility (CMH) A residential building for the care or treatment of individuals with serious mental illness, serious emotional disturbance, or developmental disability that is either a state facility or a licensed facility.

FAP (DHS) Food Assistance Program

Family Foster Care (DHS) is defined as a comprehensive and coordinated set of activities designed to place and supervise children in non-institutional, out-of-home care which includes homes of relatives, licensed foster family homes and foster family group homes.

FANS (DHS) Family Assessment of Needs and Strengths

FAPE (EDU) Free Appropriate Public Education

FBA (EDU) Functional Behavior Assessment

FC (DHS) Foster Care

FCRB (DHS) Foster Care Review Board

Felony (JJ) means an offense punishable by imprisonment for more than one year or an offense expressly designated by law as a felony.

FERPA (EDU) Family Educational Rights and Privacy Act

Fetal Alcohol Spectrum Disorder (Med) describes a range of effects that can occur in an individual caused by maternal consumption of alcohol during pregnancy. These effects may include physical, behavioral, mental and/or learning disabilities with possible lifelong implications.

FFS Fee for Service

Fictive Kin (DHS) aka unrelated caregiver; Adults who are not related to a child by blood, marriage or adoption but who have a psychological/emotional bond with the child and are identified as “family” due to their active role in the functioning of the nuclear family.

Flexible Schedules (JJ) Services to juveniles and their families must be provided during periods that accommodate the juvenile’s education and employment schedules.

Fostering Connections (DHS) The Fostering Connections to Success and Increasing Adoptions Act is designed to connect and support relative caregivers, improve outcomes for children in foster care, provide for tribal foster care and adoption access, and improve incentives for adoption. It provides state options for subsidized guardianship payments for relatives, incentives for adoption, adoption assistance, kinship navigator programs, new family connection grants, and federal support for youth to age 21.

FPE (CMH) Family Psycho-education

FQHC Federal Qualified Health Clinics

FQHCs Federally Qualified Health Centers

FRC Family Resource Centers

Freedom of Information Act (FOIA) (JJ) regulates and sets requirements for the disclosure of public records by all “public bodies” in the State. The County, its agencies, boards, departments, commissions, and councils are covered. Any program funded by the County is also covered, to include the JAC, CMO’s and Provider Agencies.

Friend of the Court (FOC) is part of the Circuit Court in Michigan. Friend of the Court staff assists the Circuit Court in those domestic relations cases that involve minor children by:

- Investigating child custody, parenting time, and child support
- Enforcing the court’s orders in those areas
- Offering mediation services
- Providing administrative oversight for domestic relations cases

FX Fracture

FY Fiscal Year

GAL (DHS) Guardian Ad Litem; A lawyer or non-lawyer who represents the best interest of a child in a child welfare court proceeding.

GAP (DHS) Guardianship Assistance Program; provides financial assistance to caretakers who assume legal guardianship of a child from out-of-home care.

GF General Fund

GPGS (EDU) Great Parents, Great Start

Grievance (CMH) a structured process to request reconsideration of a decision rendered by the Agency, its contractors or sub-contractors regarding denial, reduction, suspension or termination of mental health or substance abuse services or supports

GSCW (EDU) Great Start Collaborative Wayne

GSWCPC (EDU) Great Start Wayne County Parent Coalition

GSRP (EDU) Great Start Readiness Program (formerly MSRP)

HB (CMH) Home Based

H/H (EDU) Homebound and Hospitalized

HER Electronic Health Records

HES Health and Education Services

HHS U.S. Department of Health and Human Services

HI Hearing Impairment

High Risk Youth (DHS) A child who's characteristics, disability, problem, or environment would tend to increase the likelihood of his or her abusing or harming himself or others.

HIPAA Health Insurance Portability and Accountability Act

HMO Health Maintenance Organization

Home Based Services (CMH) are designed to provide intensive services to children (birth through age 17) and their families with multiple service needs who require access to an array of mental health services. Treatment is based on the child's need with the focus on the family unit. The service style must support a strength- based approach emphasizing assertive intervention parent and professional teamwork and community involvement with other service providers. Intensive services based on individual family needs (2 to 20 hours per week) are provided to children and their families in their home and community. (Medicaid Provider Manual)

HRA Hospital Rate Adjuster

HRSA Health Resources and Services Administration

h.s. (Med) Hour of Sleep

HSAG Health Services Advisory Group

HSCC Human Service Collaborative Council/Human Service Community Collaborative

HSW Habilitation Supports Waiver

hx History

ICAMA (DHS) Interstate Compact on Adoptions and Medical Assistance

ICC Interagency Coordinating Council

ICD-9-CM (Med) International Classification of Diseases-9th revision-clinical Modification

ICHAT Internet Criminal History Access Tool

ICJ (DHS) Interstate Compact for Juveniles

ICM Intensive Case Management (SA) A thorough, long-term service to assist clients with serious mental illness (particularly those with psychiatric and functional disabilities and a history of not adhering to prescribed outpatient treatment) by establishing and maintaining linkages with community-based service providers. ICM typically provides referrals to treatment programs, maintains advocacy for clients, provides counseling and crisis intervention, and assists in a wide variety of other basic services.

ICPC (DHS) Interstate Compact on the Placement of Children

ICR (CMH) Intensive Crisis Residential

ICU (Med) Intensive Care Unit

ICWA (DHS) Indian Child Welfare Act

IDEA (EDU) Individuals with Disabilities Education Act

IDEIA (EDU) Individuals with Disabilities Education Improvement Act of 2004

IDDT (SA) Integrated Dual Disorder Treatment

IDT (DD) Interdisciplinary Team

i.e. that is

IE Initial Evaluation

IEP (EDU) Individualized Education Program

IEPT (EDU) Individualized Educational Program Team

IFSP (EDU) Individualized Family Service Plan

IHB (CMH) Intensive Home Based

IICAPS (CMH) Intensive In Home Child Adolescent Psychiatric Services

IMH (CMH) Infant Mental Health

In-Home Detention (JJ) is supervision provided to arrested youth returned to their own homes, pending a formal adjudication hearing and/or placement. A contract is signed by the youth, the parents and the court, outlining conditions that must be followed during this time. Surveillance takes the form of daily contacts with the youth, the parents, the school, employers, etc., to insure the contract conditions are met. Electronic monitoring may be used to enhance this service. The CMO's must provide direct case management to juveniles assigned to in-home detention.

Independent Living (JJ) The last phase prior to the juvenile's termination from enrollment and becoming totally responsible for his/her own welfare. The juvenile lives in their own housing arrangement in the community, receives a room and board subsidy, maintains full-time employment and/or educational enrollment and receives minimal staff supervision and support.

Independent Living (DHS) a program for children who need assistance with the skills to be independent. These programs are intended to be transitions into independent adulthood. In Michigan, this program is referred to as Youth in Transition (YIT)

Individualized Educational Planning Team (IEPT) (EDU) is the formal educational procedure for having a youth evaluated for special education services in Michigan.

Individualized Plan of Service/Treatment Plan (IPOS) (CMH) a written plan of treatment/services/supports developed through a person centered planning process in partnership between the consumer, family or guardian (if applicable) and qualified professional(s) (e.g. mental health professional (MHP), child mental health professional (CMHP) or qualified mental retardation professional (QMRP) to address identified desires and needs and to establish meaningful and measurable goals that are prioritized by the consumer. It must be authenticated by the consumer and the responsible professional(s). The consumer and their treatment team will review it no less than annually or more frequently as deemed necessary.

Initial Assessment (SA) a process that collects sufficient information to determine a level of care based on at least the six dimensions of the American Society of Addiction Medicine Patient Placement criteria. This initial assessment process also gathers enough information to determine an initial diagnostic impression using the Diagnostic and Statistical Manual of Mental Disorders, Fourth Edition.

Initial Screening (CMH) means providing for either a face-to-face or telephone interaction concerning a minor in which a preliminary judgment is made regarding the

need for mental health services for the minor and whether the minor's situation is one requiring non-emergency mental health services or emergency evaluation. (Reference R 330.2105 (e))

Intake (DHS) Intake begins when DHS receives a phone call or mail and consists of fact-finding activities and evaluation of information to determine the type of information being received and the action needed. Types of intake include but are not limited to receipt of messages, informational calls, request for services, complaints or allegations of child abuse/neglect, licensing issues and any other information that must be acted upon. Intake activities include such things as assessing the need for services, referring for services, determining the validity of a complaint and assessing the level of risk to the child, assigning for an investigation, assigning or linking the information received to an existing case or investigation, etc.

Intake Evaluation (CMH) means social and psychological assessments, which are appropriate in identifying the problems of the minor together with a mental history, and other assessments as necessary to ascertain the mental health needs of the minor. Evaluation activities in which the program engages to determine the specific needs of the individual may also include:

- Psychological testing and evaluations
- Aptitude tests, standardized adaptive function tests inc.
- Psychiatric evaluation and diagnosis
- Medical evaluation and diagnoses as appropriate
- Occupational therapy, speech and language therapy, auditory, physical therapy, dietary, nursing evaluations
- Educational, pre-vocational, or vocational

Intensive Crisis Stabilization (CMH) The process of stabilizing an individual in acute crisis to avert a psychiatric admission or to shorten the length of an inpatient stay.

Intensive Crisis Stabilization Services (CMH) are structured treatment and support activities provided by a mental health crisis team and designed to provide a short-term alternative to inpatient psychiatric services. Services may be used to avert a psychiatric admission or to shorten the length of an inpatient stay when clinically indicated (Medicaid Provider Manual)

Intensive Supervision (JJ) For high-risk probation youth and juveniles entering the system and committed juveniles returning from out-of-home placements through community-based plans of care.

Intensive Service (JJ) means that the worker-to-caseload ratio is not more than 1:20, and that there is not less than one face-to-face contact per week during the period of CMO assignment.

Investigation (DHS) The gathering and assessment of objective information to determine if a child has been or is at risk of being maltreated. Investigation includes, but is not limited to, data collection, review of priors, interviews, referrals, assessments, emergency services, and findings.

IO (EDU) Instructional Objective

IOP (CMH/SA) Intensive Outpatient

IP Inpatient

IPOS (CMH) Individual Plan of Service

IQ Intelligence Quotient

IRC (EDU) Interdisciplinary Review Committee

ISD (EDU) Intermediate School District

ISFC (DHS) Intensive Supportive Foster Care

ISP/USP (DHS) Initial Service Plan/Updated Service Plan

IT Information Technology

ITP Individual Transition Plan

ITT (CMH) Interdisciplinary Treatment Team

IV-A (DHS) Title IV-A of the Social Security Act (i.e. TANF)

IV-B (DHS) Title IV-B of the Social Security Act (i.e. Child and Family Services, non-Title E)

IV-D (DHS) Title IV-D of the Social Security Act (i.e. Child Support)

IV-E (DHS) Title IV-E of the Social Security Act (i.e. Foster Care and Adoption Assistance)

IVDA (SA) Intravenous Drug Abuser

JAC (JJ) Juvenile Assessment Center

Jail Diversion (CMH) a collaborative, integrated program utilizing a community's resources to divert a person with serious mental illness, serious emotional disturbance or developmental disability from possible jail incarceration when appropriate.

JAIS (JJ) Juvenile Agency Information System

JDF (JJ) Juvenile Detention Facility
(Medical) Juvenile Diabetes Foundation
JJ Juvenile Justice

JJOLT (JJ) Juvenile Justice Online Technology

Juvenile Access and Assessment Center (JJ) is a Wayne County contracted agency which is responsible for providing a single-point of entry as the gateway into juvenile justice services for eligible youth and their families, using consistent methods for alcohol, drug and educational testing, assessment of individual risk factors, clinical needs, strengths and caretaker capabilities and ongoing monitoring of service delivery in conjunction with the youth's progress.

Juvenile Agency Information System (JAIS) (JJ) is the automated information system managed by the Wayne County Department of Children and Family services, used to record data on all Wayne County delinquent youth.

Juvenile Justice Services Handbook (JJSH) (JJ) is the Department of Children and Family Services manual, which details the Department's policies and procedures for Juvenile Services.

LD (EDU) Learning Disability or Learning Disabled

LEA (EDU) Local Education Agency

LEIN Law Enforcement Information Network

LEP (Limited English Proficiency) (CMH) Persons, who cannot speak, write, read or understand the English language in a manner that permits them to interact effectively with health care providers and social services agencies.

Level of Care (DHS) the identification of the least restrictive environment for the placement of a child. This can include foster homes, group homes, residential treatment centers, hospitals, locked or unlocked facilities, etc.

Level of Care (LOC) (CMH) the intensity of professional care required to achieve the treatment objectives for a specific episode of care.

LGBTQ Lesbian, Gay, Bi-Attractional, Transgendered, and Questioning youth

Li (Medical) Lithium

Linguistically Appropriate Services (CMH) Provided in the language best understood by the consumer through bi-lingual staff and the use of qualified interpreters, including American Sign Language, to individuals with limited- English proficiency. These services are a core element of cultural competency and reflect an understanding, acceptance, and respect for the cultural values, beliefs, and practices of the community of individuals with limited-English proficiency. Linguistically appropriate services must be available at the point of entry into the system and throughout the course of treatment, and must be available at no cost to the consumer.

LLP (CMH) Limited Licensed Psychologist

LOA Leave of Absence

LOS Length of Stay

LPC (CMH) Licensed Professional Counselor

LRE (EDU) Least Restrictive Environment

LSW (CMH) Licensed Social Worker

LTP Living Together Partner

MA (EDU) Mental Age
Master of Arts

MACMHB (CMH) Michigan Association of Community Mental Health Boards

MCBAP (SA) Michigan Certification Board for Addiction Professionals

Maltreatment (DHS) An act or failure to act by a parent, caretaker, or other person as defined under State law which results in physical abuse, neglect, medial neglect, sexual abuse, emotional abuse, or an act or failure to act with presents an imminent risk of serious harm to a child.

Mandated Reporters (all child serving systems) Individuals mandated by law to report suspected child abuse or neglect. Mandated reporters include professionals such as but not limited to physicians and other medical personnel, dentists, school administrators, school counselors, teachers, etc. Mandated reporters also include certain DHS

employees including but not limited to eligibility specialists, family independence managers, social service specialists, and social workers.

MARE (DHS) Michigan Adoption Resource Exchange

MARSE (EDU) Michigan Administrative Rules for Special Education

Master Client Index (DHS) A historical tracking system of clients receiving benefits in order to analyze movement patterns within and across specific State programs.

MCPN (CMH) Managed Care Provider Network

MDCH (Michigan Department of Community Health, State of Michigan) The State division is responsible for funding a comprehensive array of specialty mental health services for persons with serious mental illness and children with serious emotional disturbances and specialty services for persons with developmental disabilities and to priority populations as defined in the Michigan Mental Health Code.

MCI (DHS) Michigan Children’s Institute

MCO (CMH) Managed Care Organization

MDCIS (Michigan Department of Consumer and Industry Services) (CMH) The State agency responsible for licensure and certification of Adult Foster Care homes.

MDE Michigan Department of Education

MDT Multidisciplinary Team

MEAP (EDU) Michigan Educational Assessment Program

Med. Rev. (CMH) Medication Review

Medicaid Abuse (CMH) This term, generally used in the context of Medicaid Fraud and Abuse, refers to provider practices that are inconsistent with sound fiscal, business or medical practices, and result in and unnecessary cost to Medicaid program, or in reimbursement for services that are not medically necessary or that fail to meet professionally recognized standards for health care. It also includes recipient practices that result in unnecessary cost to the Medicaid program.

Medicaid Eligibility Determination (JJ) is the process for establishing an active Medicaid case for the youth for the provision of health and medical related services while in out-of-home care.

Medicaid Eligible (CMH) An individual who has been determined to be eligible for Medicaid by the State of Michigan.

Medicaid Fair Hearing (CMH) is an impartial review by an Administrative Law Judge from the Department of Community Health of a decision made to deny, terminate, suspend, or reduce a Medicaid Covered Service that the Medicaid beneficiary disagrees with also known as an Administrative Hearing.

Medicaid Health Plan (CMH) is a health plan (e.g., HMO, PPO, POS) in which a Medicaid recipient may belong. The MHP pays for mental Health services when a consumer is Medicaid eligible but does not meet the Developmental Disability, Severe Mental Illness or Serious Emotional Disturbance requirements.

Medical Necessity (CMH) as defined by the Michigan Department of Community Health, refers to mental health (and/or substance use disorder) services that are:

- Necessary for screening and assessing the presence of a mental illness or substance (use) disorder; as defined by standard diagnostic nomenclature of the American Psychiatric Association (i.e. DSM-IV or its successor);
- Required to identify and evaluate a mental illness or substance (use) disorder that is inferred or suspected;
- Intended to treat, ameliorate, diminish, or stabilize the symptoms of mental illness (or substance use disorder) and to prevent or delay relapse;
- Expected to prevent, arrest, delay the development of progression of a mental illness (or substance use disorder) and to prevent or delay relapse;
- Designed to provide rehabilitation for the recipient to attain or maintain an optimal level of functioning according to his or her potential (including functioning in important life domains, such as daily activities, social relationships, independent living and employment pursuits);
- Delivered consistent with national professional standards of practice in community psychiatry, psychiatric rehabilitation and in substance abuse and/or empirical professional experience;
- Provided in the least restricted setting appropriate and available.

Medical Passport (DHS) All information available about the child's health, including immunizations, basic health history, ongoing medications, current appointments, and any known health providers.

Medical Subsidy (DHS) provides reimbursement of approved expenses related to physical, mental or emotional conditions of the adopted child or the child with a guardian.

MELT Management and Executive Leadership Team

Member (CMH) an individual who is eligible and covered for mental health and services under a benefit plan with Carelink or BHPI. A member may designate an authorized representative to act on his or her behalf at any time.

Mental Health Professional (CMH) means a person who is trained and experienced in the areas of mental illness or mental retardation and who is any one of the following:

- A physician who is licensed to practice medicine in Michigan and who has substantial experience with persons diagnosed with mental illness or developmental disability
- A psychologist;
- A registered nurse;
- A professional person other those defined in these rules that is designated by the director in written policies and procedures. This mental health professional shall have a degree in his or her profession and shall be recognized by his or her respective professional association as being trained and experienced in the field of mental health. (Reference R 300.1001)

MET (EDU) Multidisciplinary Evaluation

MGF Maternal Grandfather

MGM Maternal Grandmother

MGP Maternal Grandparents

MH Mental Health

MCH (CMH) Mental Health Code

MHSA (EDU) Michigan Head Start Association

MI (CMH) Mentally Ill/Mental Illness

(CMH) Motivational Interviewing A client-centered, directive method for enhancing intrinsic motivation to change by exploring and resolving ambivalence.

MiAEYC (EDU) Michigan Association for the Education of Young Children

MI-AIMH (CMH) Michigan Association of Infant Mental Health

MI Child (DHS) Michigan Insurance for Children of the uninsured

MiCI (EDU) Mild Cognitive Impairment

MiCSES Michigan Child Support Enforcement System

Michigan Department of Human Services (DHS) is the State of Michigan social and child welfare agency established by PA 223 of 1995.

MiChild (CMH) a health insurance coverage program using state funds as well as funds authorized under Title XXI of the Federal Social Security Act to furnish health care coverage to a targeted population. This population consists of individuals under age 19 who are not eligible for Medicaid, whose family income is above 150% and at or below 200% of the federal poverty level and does not have health coverage.

Misdemeanor (JJ) is any act or omission, not a felony, punishable according to law, by a fine, penalty or forfeiture and imprisonment less than one year, or by such fine, penalty or forfeiture, or imprisonment, in the discretion of the Court.

Mission Statement defines why an organization was created and its fundamental reason for being in business.

MMIS Medicaid Management Information System

Mo Mother

MoCI (Education) Moderate Cognitive Impairment

MOE (DHS) Maintenance of Effort

MPHI Michigan Public Health Institute

MPRI Michigan Prison Re-entry Initiative

MR (EDU) Mentally Retarded/Mental Retardation
(CMH) Medication Review

MRS (Michigan Rehabilitation Services) (CMH) now known as the Michigan Department of Career Development- Rehabilitation Services.

MS Master of Science

MSA Medical Service Administration

MSW Master of Social Work

MT Music Therapy

MTC (SA) Modified Therapeutic Community A therapeutic community whose approach to treatment adapts the principles and methods of the therapeutic community to the circumstances of the COD client. The MTC employs interventions that have special functions, all of which share community, therapeutic, and educational purposes. All interventions are grouped into four categories: community enhancement, therapeutic/educative, community/clinical management, and vocational.

MTP Master Treatment Plan

Multicultural Services (CMH) Specialized mental health services for multicultural populations such as African-Americans, Hispanics, Native Americans, Asian and Pacific Islanders, and Arab/Chaldean-Americans.

Multiple Complaints (DHS) When at least three or more child abuse/neglect complaints are received on a family and the complaint includes a child age three or under.

MYOI (DHS) Michigan Youth Opportunities Initiative

NA (SA) Narcotics Anonymous

n/a Not Applicable

NAEYC (EDU) National Association for the Education of Young Children

NASMD National Association of State Medicaid Directors

NASMHPD National Association of State Mental Health Program Directors

Nat Natural

NCADD (SA) National Council on Alcoholism & Drug Dependence (Nat'l Advocacy Organization)

NCADD/MI (SA) National Council on Alcoholism & Drug Dependence of Michigan

NCANDS (DHS) National Child Abuse and Neglect Data System; A national data collection system of child abuse and neglect data from CPS agencies. Contains child level and aggregate data.

NCCBH National Council for Community Behavioral Healthcare

NCCMHS New Center Community Mental Health Services

NCLB (EDU) No Child Left Behind

Neg Negative

NEGC Northeast Guidance Center

Neuro Neurology or Neurologist or Neurological Exam

NHANES National Health and Nutrition Examination Survey

NHII National Health Information Infrastructure

NHS Northeast Health System

NICHY (EDU) National Dissemination Center for Children with Disabilities

NKA (Med) No Known Allergies

Non-Categorical Funds (CMH) Funds that are not designated for any specific programs, services, or special populations.

Notice (Notification) (DHS) An act or instance of notifying, making known, informing or giving notice. Notifications are documents generated and sent to outside parties.

NPI National Provider Identifier

NRE (DHS) Nonrecurring Expenses; reimbursement to the adoptive parent specific expenses of adopting an eligible child

NSO Neighborhood Service Organization

NYTD (DHS) National Youth in Transition Database

OBE (EDU) Outcomes Based Education

OBRA (Omnibus Budget Reconciliation Act of 1987; 1990) (CMH) federally mandated legislation establishing programs and a funding program that was developed in 1989.

Obs Obsolete

OCAL (DHS) Office of Children and Adult Licensing

OD Overdose

OHI (EDU) Otherwise Health Impaired

OM (EDU) Orientation and Mobility

Ongoing Investigations/Ongoing Cases (DHS) Ongoing protective services which are provided on cases with a preponderance of evidence of child abuse and/or neglect as long as the child needs protection. Ongoing cases are kept open and monitored for a minimum of 909 days and include cases with an extensive history of CPS involvement and those where the severity of the incident is such that a reoccurrence could result in harm to the child.

OP (CMH) Outpatient

ORR Office of Recipient Rights

OSE/EIS (EDU) Michigan Department of Education: Office of Special Education and Early Intervention Programs

OSEP (EDU) United States Department of Education: Office of Special Education Programs

OT (EDU) Occupational Therapy or Occupational Therapist

OTIS (DHS) Offender Tracking Information System

Out-of-Area Services (CMH) These services are provided to Wayne County consumers by out-of-area service providers who are not part of the Detroit-Wayne County Community Mental Health Network. Typically, special “purchase of service” arrangements are negotiated with the out-of-area provider or responsible CMHSP for that area, to provide the service(s). While DWMHA’s MCPNs are expected to have a countywide network, there may be occasions when the MCPN may need to secure such service provisions as out-of-area on a temporary time targeted basis. There are times when such services may have to be obtained out of state, however, these out-of-area and out of state services will need to be authorized, paid and monitored by the MCPN. Transportation should be provided when necessary.

Out of Home Placement (JJ) For placed/committed juveniles whose risk factors and/or clinical needs exceed the capability for community-based care management, residential placement shall be provided. These juveniles will be placed in residential detention and low, medium or high security residential facilities.

Out-of-Network Services (CMH) Services provided by a mental health professional who does not participate in the Provider Network.

Outreach (CMH) Efforts to extend services to those Persons who are under-served or hard-to-reach that often require seeking individuals in places where they are most likely to be found, including hospital emergency rooms, homeless shelters, senior centers, nursing homes, primary care clinics and similar locations.

Override (JJ) refers to extenuating circumstance(s) resulting in an escalation (increase) or mitigation (decrease) to a juvenile's security level. Discretionary overrides are based on individual case evaluation and circumstances. Mandatory overrides are predetermined, based on policy.

P2E (DHS) Path to Excellence

PA Public Act

PA 198 (EDU) Mandatory Special Education Act of 1971

PA 451 (EDU) School Code of 1976 (replaced 198)

P&A (EDU) Protection and Advocacy Services

PAC (EDU) Parent Advisory Committee

Participating Provider (JJ) an agency under contract with a CMO to provide direct "covered" services to juveniles and their families. The agency must continually meet all applicable standards established by the Contract or included in the JJSH.

Participating (PAR) Provider (CMH) A participating (PAR) provider has an agreement with Carelink and/or its affiliated companies to provide mental health to Carelink members. Unless otherwise specified, in this policy the term PAR provider refers not only to institutions, but also to PAR individual professionals.

PASARR (CMH) readmission screening and annual resident review are requirements of the OBRA program. Preadmission screening must be completed prior to placement of a person with mental illness in nursing homes. Annual review determines the need for continued nursing home care and whether specialized services for the mental illness are indicated.

PATH Personal Action Toward Health

PATP (DHS) Parent Agency Treatment Plan

PBS (EDU) Positive Behavior Support

PCP (Med) Primary Care Physician

PCP (Person Centered Planning) (CMH) Process for planning and supporting an individual receiving services that builds upon the individual's capacity to engage in activities that promote community life and that honor the individual's preferences, choices, and abilities through the Public Mental Health System. The person centered planning process involves families, friends, and professionals as the individual desires or requires.

PCW (DHS) Permanent Court Ward

PDFA (SA) Partnership for a Drug-Free America

PDN (Med) Private Duty Nurse

PDR (Med) Physicians Desk Reference

PE Psychiatric Evaluation

PECFAS (CMH) Preschool/Early Childhood Functional Assessment Scale

PECS (EDU) Picture Exchange Communication System

Permanency/Permanency Planning (DHS) Permanency includes family preservation, reunification, adoption, and guardianship services. Permanency planning is a core concept that guides the delivery of all child welfare services. It is the basis for programs that maintain families and enables children to remain within their own homes, and for programs that provide permanent family resources when a child's parents cannot be expected to ever provide adequate care for their child(ren). The goal of permanency planning is:

- Keep children safe within their own home and prevent the unnecessary separation of families.
- Return children and youth in care to their families in a safe and timely manner.
- Provide safe permanency alternatives for children and youth when reunification is not possible.

Perpetrator (DHS) aka Perp; An individual for whom there is a preponderance of evidence that he/she has committed child abuse/neglect.

Petition (DHS) A legal document filed with the court of original jurisdiction overseeing matters affecting children requesting that the court take action regarding the child's status as a result of an investigation; usually a petition requesting the child be declared a dependent or delinquent child, or that the child be placed in an out-of-home setting.

PHAT (EDU) Physical Health Action Team

PHI (CMH) Protected Health Information

PHR Personal Health Records

PI (EDU) Physical Impairment

PIHP (Prepaid Inpatient Health Plan) (CMH) Organization that manages specialty health care services under the Michigan Medicaid Waiver Program for Specialty Services.

PIP Performance Improvement Project

PL Public Law

PL-94-142 (EDU) Education for all Handicapped Children Act

Placement (DHS) When a determination is made that a child needs to be placed outside of the home to ensure their safety, CPS must place them in a temporary or permanent home where they will be well cared for a safe. Types of placement include foster care, kinship/relative placement, guardianship, adoption, etc.

PLWHI Peer-Led Whole Health

PMTO (CMH) Parent Management Training Oregon

PPC (DHS) Meetings that are held to discuss concerns related to a child's safety and placement. These meetings result in a collaborative approach between DHS, the family, foster parents, community representatives and professionals involved with the family. PPCs are held to discuss removal, emergency placement, placement preservation, permanency planning, reunification, when there is a change in the permanency goal, the child returns from AWOL status, etc. Previously known as Team Decision Making (TDM).

PPO Personal Protection Order(s)

PQA (EDU) Program Quality Assessment

Preliminary Hearing (JJ) is considered the functional equivalent of the initial arraignment in adult criminal proceedings. At the Preliminary Hearing, the Court makes findings regarding whether probable cause exists.

Preliminary Investigation (DHS) completed when the complaint information received from the reporter is insufficient to reach a decision as to whether to assign the complaint for investigation or when the complaint meets the definition of a multiple complaint. The preliminary investigation involves completion of a thorough search, reviewing the central registry and local office files, consultation with other DHS staff and completing collateral contacts.

Preliminary Report (JJ) A written report submitted to CFS by a Contractor that summarizes and documents an unusual incident or a complaint involving a probation juvenile or a committed juvenile under the care and supervision of CAFS, per agreement with the Department of Human Services. The complaint may originate from a number of sources, including but not limited to:

1. Juvenile;
2. Parent or guardian;
3. Court;
4. CAFS;
5. School;
6. Contractor; or
7. Provider

Prevention Services (CMH) are those services of the county program directed to at-risk populations and designed to reduce the incidence of behavioral, emotional, or cognitive dysfunction and the need for the individuals to become recipients of mental health services. (Reference R 330.2007).

Prevention Services (DHS) A program for families that have been identified at risk for child abuse/neglect but where actual abuse/neglect is not yet present. The Prevention Services program is designed to preserve and strengthen family functioning to prevent abuse/neglect from actually occurring.

Primary Therapist (CMH) means a child mental health professional who is responsible for the direct treatment of a minor for the agency providing direct treatment services. (Reference R 330.2105).

Priority Population (CMH) Persons who are at risk for developing serious emotional disturbance, serious mental illness, or have developmental disabilities.

Priority Response (DHS) the determination of the urgency with which CPS must respond to reported child abuse and neglect. The priority response mandates when the investigation must be commenced and when a face-to-face contact with the alleged child victim must be conducted.

Progressive Sanction (JJ) is the use of treatment interventions that begin with the least intrusive and may continue to those that provide more supervision/structure, depending on the juvenile's response to each sanction, to prevent escalation.

Provider (JJ) refers to a CMO or an agency under contract to provide direct "covered" services to juveniles and their families.

Provider Capabilities (DHS) Types of support or services the provider is capable of providing based on the child's specific needs or characteristics.

Provider Network (CMH) The network of providers contracted by MCPN and all Contracted Providers to deliver Covered Services to Recipients.

Provider Preference (DHS) Placement preferences and/or considerations indicated by the provider including age, gender, race, special needs, contact with birth families, etc.

PRR Placement Revision Request

PS (DHS) Protective Services

PSA (EDU) Public School Academy

PSEAT (EDU) Parent Support and Education Action Team

PSF (DHS) Preventive Services for Families

PSP (CMH) Parent Support Partner
(CMH) Peer Support Partner
(SA) Prevention Services Plan

PTSD Post Traumatic Stress Disorder

Psyc (CMH) Psychology or Psychiatric or Psychiatry

Psychiatric Partial Hospitalization Program (CMH) A nonresidential treatment program that provides psychiatric, psychological, social, occupational, nursing, music therapy,

and therapeutic recreational services under the supervision of a physician to adults diagnosed as having serious mental illness or minors diagnosed as having serious emotional disturbance who do not require 24 hour continuous mental health care, and that is affiliated with a psychiatric hospital or psychiatric unit to which consumers may be transferred if they need inpatient psychiatric care.

Psychotropic Medication (Med/CMH) Any medication capable of affecting the mind, emotions, and behavior. Some medications, such as Lithium, which may be used to treat depression, are psychotropic.

pt Patient

PT (EDU/Med) Physical Therapist or Physical Therapy

Public Record (JJ) is a writing, prepared, owned, used in possession of, or retained by a public body in the performance of an official function, from the time it is created. Public record does not include computer software.

PURC Peer and Utilization Review Committee

PVM (EDU) Parent Volunteer Members

PWN (EDU) Prior Written Notice

PWP Partnering with Parents

Px Prognosis

QA Quality Assurance

QHP (Qualified Health Plan) (CMH) A health plan (e.g. HMO, PPO, POS) in which a Medicaid recipient may belong. The QHP pays for mental health services when a consumer is Medicaid eligible, but does not meet the DD, SMI, or SED requirements.

QI Quality Improvement

QM Quality Management

Qualified Mental Health Professional (QMHP) (CMH) is a person with a Master's degree in Social Work, Psychology, Psychiatric Nursing or a fully licensed physician who has completed an accredited psychiatry residency with a minimum of three years' experience working with children, adolescents and their families in assessment, treatment, diagnosis and planning or qualifying bachelor's level under the supervision of a QMHP.

Qualified Mental Retardation Professional (QMRP) (CMH) is a professional who has at least one year experience working directly with persons with mental retardation or other developmental disabilities and is one of the following:

- Doctor of medicine or osteopathy;
- Registered nurse;
- An individual who holds at least a bachelor's degree in a professional category specified in 42CFR483.430 (b)(5).

QRIS (EDU) Quality Rating and Improvement System- coherent and comprehensive efforts to evaluate and improve the quality of childcare

R.E.A.D.Y. (EDU) Read, Educate And Develop Youth

Reasonable Access (Geographic Access Standard) (CMH) services are provide within 30 miles or 30 minutes in urban areas or within 60 miles or 60 minutes in rural areas.

Reasonable Efforts (DHS) the ordinary diligence and care by a child welfare agency to identify child protection problems and provide services to solve those problems so as to prevent out-of-home placement or promote family reunification.

Recovery (CMH/SA) The over arching message of recovery is that hope and restoration of a meaningful life are possible, despite serious mental illness. Instead of focusing primarily on symptom relief, as the medical model dictates, recovery casts a much wider spotlight on restoration of self-esteem and identity and on attaining meaningful roles in society.

REE Recovery Enhancing Environment

Regulation 1 or Regulation 7 (DHS)

- Regulation 1 (Relocation)- Allows for the relocation of an approved existing placement from one state to another, under certain circumstances.
- Regulation 7 (Priority Placement)- Establishes procedure for an out-of-state priority placement of children.

Reintegration Services (JJ) A Rate Band that provides intensive community support services, including daily tracking of a juvenile's movements and activities, daily employment and educational mentoring, as well as in-home counseling and support services to facilitate the juvenile's readjustment into their family, while enhancing accountability.

Reporting Source (DHS) An individual who reports a suspected incident of child abuse or neglect.

Residential Care (JJ) is an out-of-home placement which provides basic maintenance and includes generic juvenile justice treatment: education, peer group processes, individual counseling, preparation for community reintegration, family involvement, community safety through programming and facility design.

Residential Care (DHS) A nonfamilial 24 hour care facility that may be supervised by the State agency or governed privately.

Respite Care Services (CMH) are provided to assist in maintaining a goal of living in a natural community home by temporarily relieving the unpaid primary care giver. Decisions about the methods and amounts of respite should be decided during a person-centered planning (Medicaid Provider Manual)

Restitution (JJ) means that the juvenile will make full restitution (repayment) to any victim of the juvenile's course of conduct, which resulted in harm or damage.

Reunification (DHS) The return of the children to their families following an out-of-home placement.

RHIOs Regional Health Information Organizations

Risk Assessment (JJ) refers to the assessment of risk the youth poses to the community (i.e., re-offender). This process classifies re-arrest potential for groups of offenders (i.e., low, moderate, high). Risk assessment is an actuarially based system for like groups of juveniles, not an individually predictive model. Individual behavior cannot be accurately predicted by anyone or any system.

RFP Request for Proposals

RPT (SA) Relapse Prevention Therapy A variety of interventions designed to teach individuals who are trying to maintain health behavior changes how to anticipate and cope with the problem of relapse. RPT strategies can be placed in five categories: Assessment Procedures, Insight/Awareness Raising Techniques, Coping Skills Training, Cognitive Strategies, and Lifestyle Modification.

r/o Rule Out

Routine Transportation (JJ) is defined as any travel, including Court appearances, placement interviews, health care, family visitation, required by the juvenile or family for treatment purposes.

RR (CMH) Recipient Rights
(EDU) Resource Room

RRA (CMH) Recipient Rights Advisor

RRO (CMH) Recipient Rights Officer

RSDI Retirement, Survivors and Disability Insurance

Rx Prescription

SA Substance Abuse

SACWIS (DHS) Statewide Automated Child Welfare Information System; Any of a variety of automated systems designed to process child welfare information on a statewide basis. Funded in the child welfare services provision of the Omnibus Budget Reconciliation Act of 1993, SACWIS legislation provides incentive funding for development and implementation of comprehensive statewide child welfare services information systems.

Safety Assessment (DHS) the systematic collection of information on threatening family conditions and current, significant, and clearly observable threats to the safety of the child or youth. The purpose is to determine the degree to which a child or youth is likely to suffer maltreatment in the immediate future. The safety assessment assesses the present or imminent danger to a child during the investigation and at other important points during the life of the case.

SAMHSA Substance Abuse and Mental Health Services Administration

SARGe (DHS) The SACWIS Assessment Review Guide; a document that is used to provide guidance to Federal and State personnel on conducting SACWIS assessment reviews.

SBHC (EDU) School Based Health Center

SCI (EDU) Severe Cognitive Impairment

SCHIP State Children's Health Insurance Program

Screening (Screen In/Screen Out) (DHS) the process of determining, based on agency requirements (e.g. law, policy), if the complaint allegation will be accepted (i.e., screened in) for CPS investigation or not accepted (i.e., screened out).

Screening (CMH) the CMH has been notified of the Person and has been provided enough information to make a determination of the most appropriate services. The screening may be provided on-site, face-to-face, by CMH personnel, or, over the telephone.

SD Self Determination

SEA (EDU) State Education Agency

Second Opinion/Reconsideration (CMH) An additional clinical evaluation and decision provided in response to a request from an applicant, authorized representative or referring mental health professional, in dispute of an adverse decision when: 1) A specific request for inpatient hospitalization has been denied by a psychiatrist reviewer, and 2) Following a face-to-face assessment by a qualified professional, determination is made that no mental health service is needed and the applicant is referred outside DWMHA network to other human service resources.

Secondary Treatment (CMH) Secondary treatment services are those which are provided by professionals other than the treating clinician (for instance, a psychiatrist who performs a consultation or a social worker who conducts a daily living skills group at a partial hospitalization program), and individuals from relevant medical delivery systems, including Primary Care Physicians (PCPs).

Section 504 (EDU) The Vocational Rehabilitation Act amendments of 1973 that is generally referred to as the civil rights clause for people with disabilities.

Security Level (JJ) refers to the degree of structure, mobility, intensity of supervision, school location and physical characteristics of a placement. Within the CFS Structured Decision Making (SDM) there are three (3) security levels: 1) Community-Based, 2) Non-Secure, and 3) Secure. More detail provided in JJSH Policy Item 800.1 (Structured Decision-Making).

Security Matrix (JJ) is a two-factor model, based on a juvenile's (1) most serious offense; and (2) risk score, used to classify a juvenile to a security level.

SED (Serious Emotional Disturbance) (CMH-Children) Serious Emotional disturbance is a diagnosable behavioral and emotional disorder that exists or has existed within the past year for a period of time sufficient to meet diagnostic criteria specified in DSM-IV (or DSM-IV Training Guide of Diagnosis of Childhood Disorders) and results in substantial functional impairment/limitation of major life (family members, school, or community) activities throughout the duration of the disorder.

SEEIS (EDU) Special Education and Early Intervention Services

Sentinel Event (CMH) Unexpected occurrence involving death or serious physical or psychological injury, or the risk thereof. Serious injury specifically includes loss of limb or function. The phrase "or the risk thereof" includes any process variation for which a recurrence would carry a significant chance of a serious adverse outcome.

Serious Emergency (JJ) refers to the death, high profile truancy, alleged commission of a serious crime, serious assault, breach of security, fraud, gross misconduct or serious injury occurring at a CMO contracted residential care facility or community program operating under the auspices of the Wayne County Department of Children and Family services (CFS).

Service Agreement (DHS) The casework document developed between the CPS caseworker and the family that outlines the tasks necessary to achieve goals and outcomes necessary for risk reduction. The service agreement is a plan structured to reduce the risk to the child and to meet service agreement goals that will lead to case closure.

Service Plan (DHS) A plan that identifies issues and needed services for children and their families. The service plan consists of the risk assessment, safety assessment, family and children's assessments of needs/strengths and the service agreement.

Sex Offender Treatment (Community-Based) (JJ) includes activities which provide intensive treatment and supervision services to a specific juvenile population that is placed in the community or returning to the community from a residential sex offender treatment program. In addition to basic care, services must include frequent contacts with the juvenile and family, intensive social services, low staff/juvenile ratios and enhanced hours of counseling. The juvenile and his family are provided with specialized treatment and education. This enables them to better understand the cycle of sexual offending behavior and develop specific methods to prevent any future offending behavior. This service may be supported by Electronic Monitoring.

Sexual Exploitation Includes allowing, permitting or encouraging a child to engage in prostitution, or allowing, permitting, encouraging or engaging in the photographing, filming, or depicting of a child engaged in a listed sexual act as defined in section 145c of the Michigan Penal Code, 1931 PA 328, MCL 750.145c.

Sib Sibling(s)

SIL (DHS) Supervised Independent Living

SIP Supported Independent Living

Sis Sister

SLD (EDU) Specific Learning Disability

SLI (EDU) Speech and Language Impairment

SMI (Serious Mental Illness) (CMH) Diagnosable mental, behavioral, or emotional disorder affecting an adult that exists or has existed within the past year for a period of time sufficient to meet diagnostic criteria specified in the most recent diagnostic and statistical manual of mental disorders, published by the American Psychiatric Association and approved by the MDCH, in functional impairment that substantially interferes with or limits one or more major life activities. Serious mental illness includes dementia with delusions, dementia with depressed mood and dementia occurs in conjunction with another diagnosable serious mental illness. The following disorders are included only if they occur in conjunction with another diagnosable mental illness: 1) A substance abuse disorder 2) A developmental disorder 3) A "V" code in the diagnostic and statistical manual of mental disorders.

SOC- Systems of Care (CMH) is a comprehensive system spectrum of mental health and other necessary services which are organized into a coordinated network to meet the multiple and changing needs of children and adolescents with severe emotional disturbance and their families. (Stroul & Freidman, 1986).

SOP (DHS) Standard of Promptness; The time period in which a field investigation should be completed and a disposition made. The SOP for completing an investigation is 30 days from the department's receipt of the complaint. This includes completion of the safety assessment; risk assessment; family and child assessments of needs and strengths; CPS Investigation Report; services agreement; as needed; and case disposition on the system.

Southeast Michigan Community Alliance (SEMCA) (JJ) is authorized by the Michigan Department of Community Health to provide substance abuse funding for all of Wayne County, except Detroit. They also approve providers to become Medicaid billable.

SSI Supplemental Security Income

SSW (EDU) School Social Worker

State Hospital Services (CMH) An inpatient program operated by the Michigan Department of Community Health for the treatment of individuals with serious mental illness or serious emotional disturbance.

Status offense (JJ) A non-delinquent/non-criminal offense; an offense that is illegal for underage persons, but not for adults.

- Curfew violation - Violation of an ordinance forbidding persons below a certain age from being in public places during set hours.
- Incurable, ungovernable - Being beyond the control of parents, guardians, or custodians.
- Running away - Leaving the custody and home of parents or guardians without permission and failing to return within a reasonable length of time.
- Truancy - Violation of a compulsory school attendance law.
- Underage drinking - Possession, use, or consumption of alcohol by a minor.

STO (EDU) Short Term Objective

Strength and Needs Assessment Scale (JJ) provides a quarterly assessment of the type of, and relative priority of, a juvenile's needs for services and establishes a baseline for periodic progress reviews.

Structured Decision Making (SDM) (JJ) is a management tool used to assess the relative needs and risks of juveniles, and then to assign agency/treatment resources accordingly. It pertains to both agency-based and community (diversion/aftercare) service settings.

Substance Abuse (CMH/SA) a maladaptive pattern of substance use manifested by recurrent and significant adverse consequences related to the repeated use of substances. If the primary diagnosis is mental illness then the CMH will be the lead agency for the determination of necessary services with coordination with the Substance Abuse Coordinating Agency. If the primary diagnosis is substance abuse, then the Substance Abuse Coordinating Agency will be the lead agency for the determination of necessary services with coordination with CMH.

Substance Abuse Testing (JJ) includes medical analysis of urine, blood or saliva for the purpose of detecting the presence of alcohol and/or controlled substances.

Substance Use Disorders (CMH/SA) Substance use disorders include Substance Dependence and Substance Abuse, according to selected specific diagnosis criteria given in the Diagnostic and Statistical Manual of Mental Disorders, Fourth Edition. Specific DSM IV diagnoses are found in Attachment 7.0.1.1 of the department's contract with CMHSPs. Technical Advisory MDCH – developed document with recommended parameters

Supervised Independent Living (JJ) is a program designed to place juveniles in community dwellings and/or staffed housing to utilize the basic learning skills acquired through pre-independent living preparation, while receiving staff support and supervision to further develop those skills and adjust to the daily routines of being a productive member of society.

SXI (EDU) Severe Multiple Impairment

T & TA (EDU) Training and Technical Assistance

TA & D (EDU) Technical Assistance and Dissemination

TANF (DHS) Temporary Assistance to Needy Families; provides assistance and work opportunities to needy families by granting States the Federal funds and wide flexibility to develop and implement their own welfare programs.

TAYP Transition Age Youth Project

Targeted Case Management (CMH) is a covered service that assists beneficiaries to design and implement strategies for obtaining services and supports that are goal-oriented and individualized. Services include assessment, planning, linkage, advocacy, coordination and monitoring to assist beneficiaries in gaining access to needed health and dental services, financial assistance, housing, employment, education, social services, and natural supports developed through the person-centered planning process. Targeted case management is provided in a responsive, coordinated, effective and efficient manner focusing on process and outcomes. (Medicaid Provider Manual)

TBI (EDU/Med) Traumatic Brain Injured

TC (EDU) Teacher Consultant

TC (Therapeutic community) (SA) A consciously designed social environment or residential treatment setting in which the social and group process is harnessed with therapeutic intent. The TC promotes abstinence from alcohol and illicit drug use, and seeks to decrease antisocial behavior and to effect a global change in lifestyle, including attitudes and values. The TC employs the community itself as the agent of healing. The TC views drug abuse as a disorder of the whole person, reflecting problems in conduct, attitudes, moods, values, and emotional management. Treatment focuses on drug abstinence, coupled with social and psychological change that requires a multidimensional effort involving intensive mutual self-help typically in a residential setting.

TCM (DHS) Targeted Case Management

TCW (DHS) Temporary Court Ward

TDD Telecommunications Device for the Deaf

TEACCH (EDU) Treatment and Education of Children with Autism and other Communication Handicaps

TF-CBT (CMH) Trauma Focused-Cognitive Behavior Therapy

Title IV-E Determination (JJ) is the process for establishing if the youth is eligible to receive Federal funding for costs incurred in the delivery of service.

TLP Transitional Living Program

TLLP (CMH) Temporary Limited License Psychologist

TOTE (EDU) Teach Our Tots Early

TPR (DHS) Termination of Parental Rights; the process of involuntarily taking away the parental rights of a parent that has abandoned a child, has without just cause failed to support a child, has neglected or abused a child, has stood by and allowed others to neglect or abuse a child, or who because of extended incarceration in prison, will be unavailable to properly parent or nurture the child during its formative years. Once the parental rights of both parents of a child have been severed, the child will become available for adoption by another family.

T-RAC (CMH) Targeted Readmissions for Children's Cases

Trained Mental Health Professional (CMH) means a person who has completed a special training program in the mental health services which is approved by the department of community mental health board and who is working under the under the direct supervision of a mental health professional (Reference R 330.1001).

Training Requirement (CMH) each full time staff member in the infants/children's/ adolescents program completes a minimum of 24 clock hours of formalized professional development and training annually with the focus being infants, children, adolescents and their families (this is in addition to other required trainings i.e. person centered planning, CPR, first aid, grievance and appeals, limited English proficiency, cultural competency etc). (Reference R 330.2125).

Treatment Plan of Care – Initial – (ITPOC) (JJ) is the responsibility of the CMO Case Manager and establishes the foundation for the service delivery to a juvenile and his/her family.

Treatment Plan of Care – Updated - (UTPOC) (JJ) is the written report, due within ninety (90) days of the Initial Plan of Care, that provides a detailed summary of the juvenile's/family's progress on the goals and objectives specified in the IPOC. It also contains new information about the juvenile/family that has or may impact service delivery.

Treatment Foster Care (JJ) provides intensive ancillary services, in addition to those defined for general foster care and supervision. Intensive juvenile activities may include low worker ratios, respite (both juvenile and family foster care), individual therapy, specialized foster parent training, crisis support, more frequent in-home services and enhanced foster family reimbursement.

TS (DD) Tourette Syndrome a neurological disorder characterized by tics-involuntary, rapid, sudden movements or vocalizations that occur repeatedly in the same way.

TSF (SA) 12-step facilitation therapy

TSLI (EDU) Teacher of Speech and Language Impaired

Tx Treatment or Therapy or Transfer

UM Utilization Management

UMC Utilization Management Committee

UR (Utilization Review) (JJ) is an independent evaluation, by the JAC, of the necessity and duration of a specified treatment service provided by the CMO.

Urgent Situation (CMH) A situation in which an individual is determined to be at risk of experiencing an emergency situation in the near future if he or she does not receive care, treatment, or support services.

USP Updated Service Plan

UWSEM United Way of Southeast Michigan

VCE Virtual Center of Excellence

VI (EDU) Visual Impairment

Victim (DHS) A child having a maltreatment disposition of substantiated or indicated.

Victim Notification (JJ) is defined as that contact made, or documentation of, attempts to make contact (in accordance with the Crime Victim's Rights Act, 1985 PA 87 as amended) with specified victims of delinquent acts committed by juveniles placed in residential care programs. Such notification must occur, upon written request of the victim, when wards are dismissed from Court jurisdiction, transferred from a secure detention or treatment facility to a non-secure treatment facility, participating in an overnight visit in the victim's county of residence, or when the ward escapes or truants from a detention or treatment facility.

Visitation Plan (DHS) A mutually agreeable arrangement in which it is determined that continuing contact by an approved person with an existing relationship to the child is in the best interests of the child. The visitation plan includes the frequency, location and duration of the visits.

Waiver (JJ) is the process by which a juvenile is transferred to criminal court jurisdiction for trial as an adult.

Warrant Enforcement Bureau (WEB) (JJ) is a unit of the Wayne County Department of Children and Family services. WEB is staffed by Wayne County Sheriff Deputies and charged with the apprehension of offenders who have violated a Court Order. In general, apprehension efforts are limited to the County of Wayne.

Wayne County Department of Children and Family Services (WCCFS) (JJ) is the Executive Branch of the County government, authorized to provide juvenile justice services for Wayne County.

Wayne County Juvenile Detention Facility (WCJDF) (JJ) is the secure detention facility operated by Wayne County for the detention of juvenile offenders.

WCDCFS Wayne County Department of Children and Family Services

WCHO Washtenaw County Health Organization

W/F White Female

W/M White Male

WNL Within Normal Limits

Wraparound Services/WRAP (CMH/JJ) a highly individualized planning process performed by specialized case managers who coordinate the planning for and delivery of wraparound services and incidental non-staff items that are medically necessary for the child beneficiary. The planning process identifies strengths, needs, strategies and outcomes. Wraparound utilizes a Child and Family Team with team members determined by the family often representing multiple agencies and informal supports. (Medicaid Provider Manual)

Wraparound services (SA) aspects of a treatment program that address difficult-to-treat problems, such as finding childcare while in treatment, arranging for proper housing, and finding employment.

WRESA (Education) Wayne Regional Educational Service Agency

WSU Wayne State University

YAP (JJ) Youth Assistance Program

YAS Youth Assistance Services

YIT/MYOI (DHS) Youth in Transition/Michigan Youth Opportunities Initiative

YOI (DHS) Youth Opportunities Initiative

YOQ Youth Outcomes Questionnaire

Your Choice (CMH) The term originally designated by DWMHA for its program for the delivery of pre-paid behavioral health services through its MCPN contracts.

